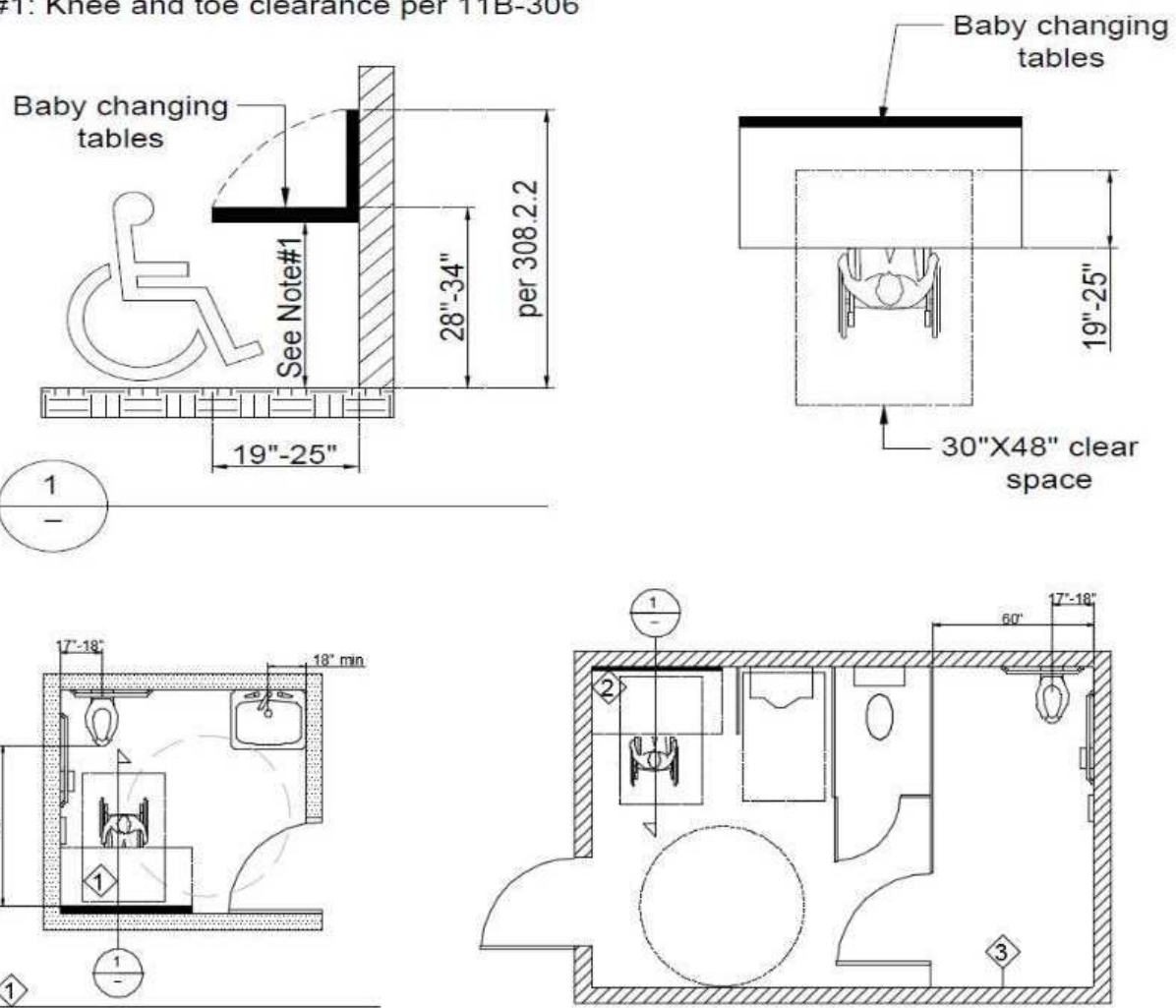


BABY CHANGING TABLES

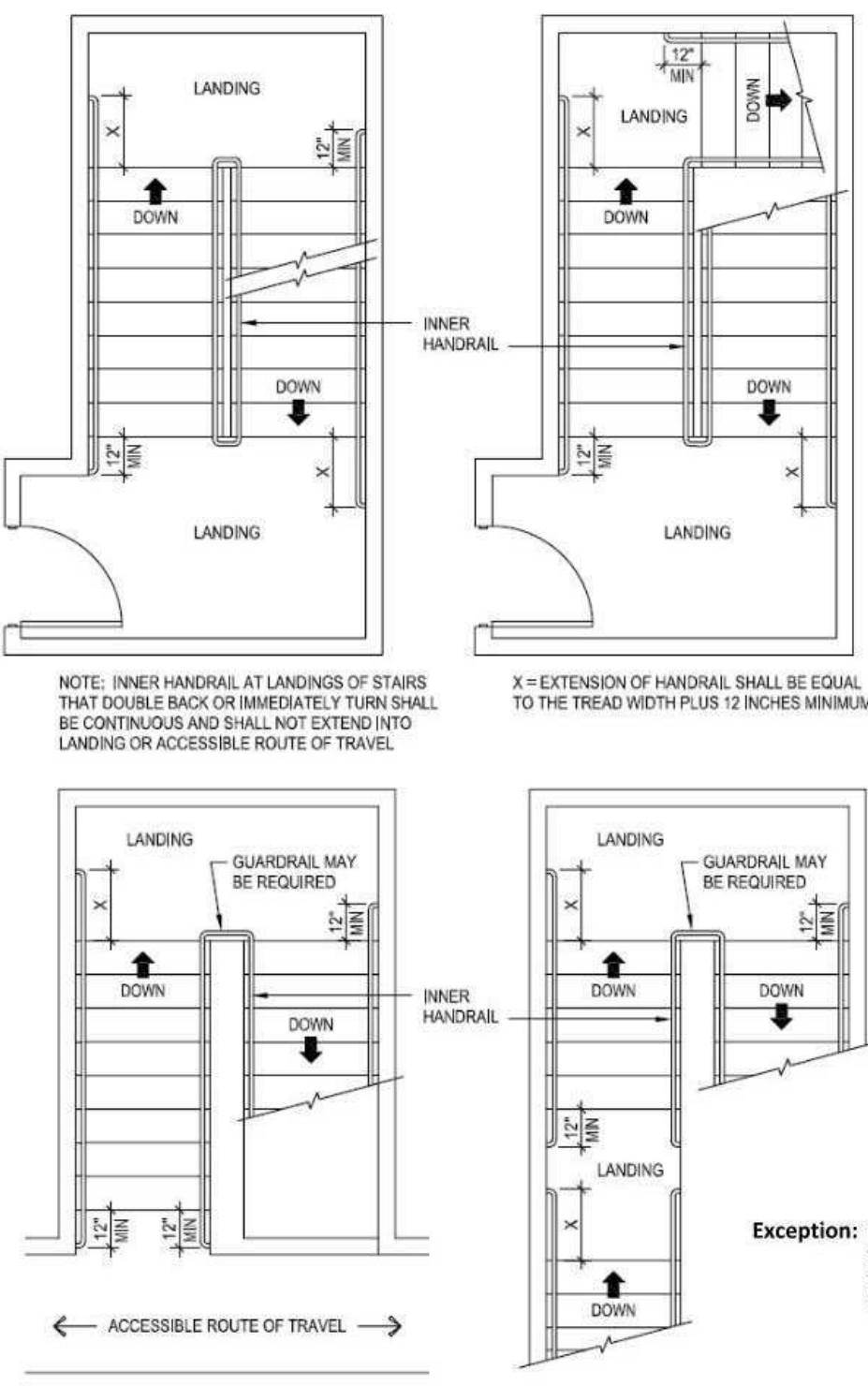
Note#1: Knee and toe clearance per 11B-306



- Baby changing tables can be located in a Unisex (single-user or family) restroom.
- Baby changing tables when deployed shall not obstruct the required width of an accessible route (11B-226.4)

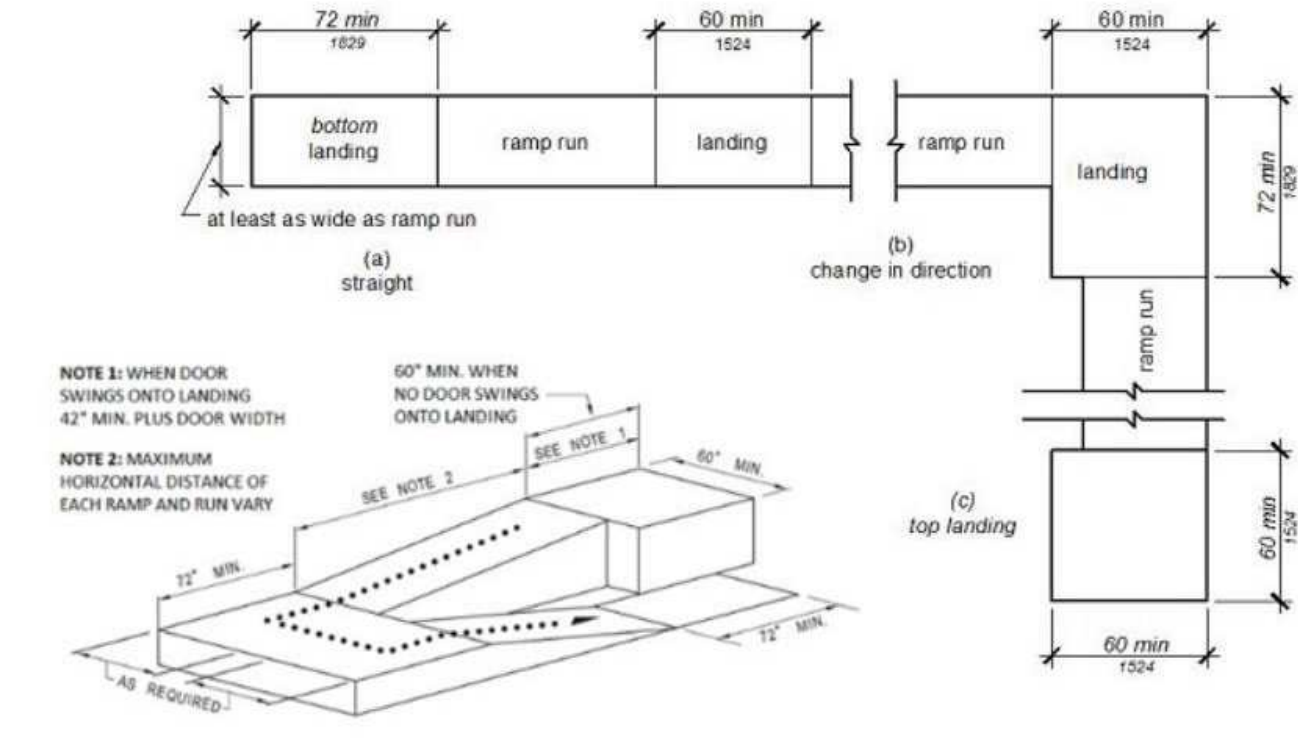
Note: When a sign is provided to indicate the location of baby diaper changing station is shall comply with raised character, brail and visual character (11B-703). See Sign info bulletin IB PBC 2017-091 for additional info.

STAIRWAYS



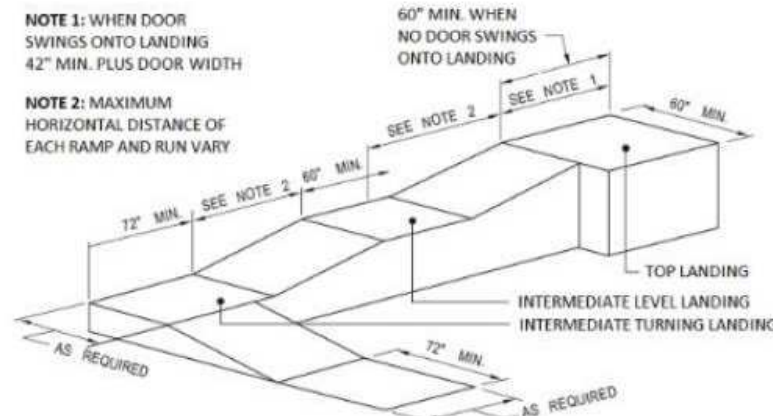
11B-504 STAIRWAYS

ACCESSIBILITY DETAILS FOR RAMPS, STAIRS & ELEVATORS

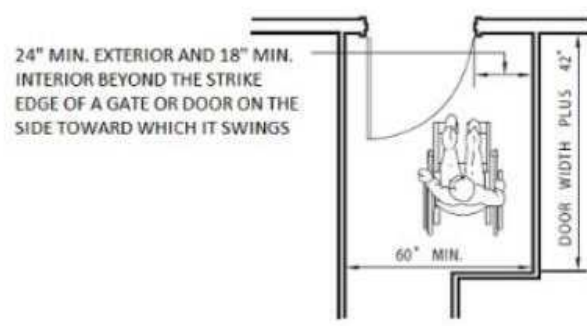


RAMPS WITH INTERMEDIATE SWITCH BACK PLATFORM

FIGURE 11B-405.7 RAMP LANDING

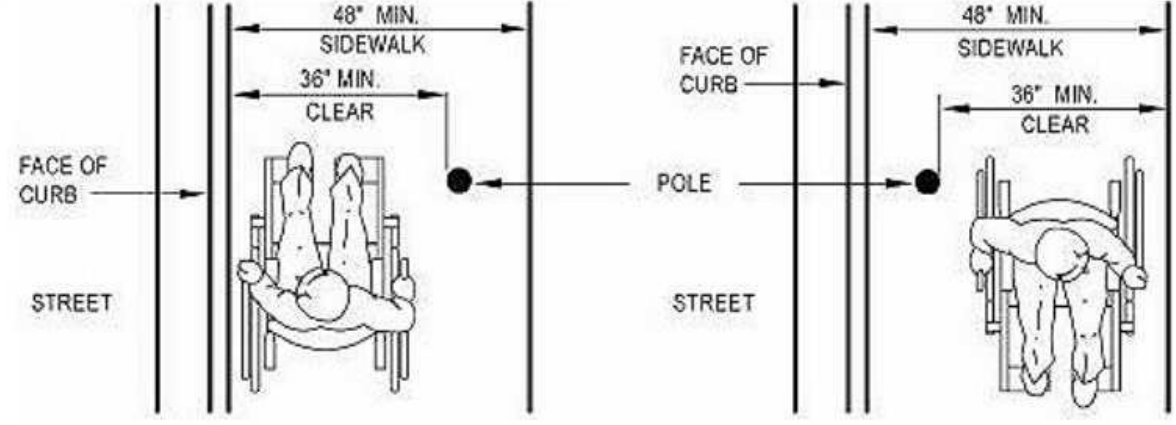


RAMPS WITH TURNING PLATFORM



RAMPS LANDING AND DOORWAY

RAMPS



11B-505.10.1 TOP AND BOTTOM EXTENSION AT RAMPS. Ramp handrails shall extend horizontally above the landing for 12 inches beyond the top and bottom of ramp runs. Extensions shall return to a wall, guard, or landing surface, or shall be continuous to the handrail of an adjacent ramp run.

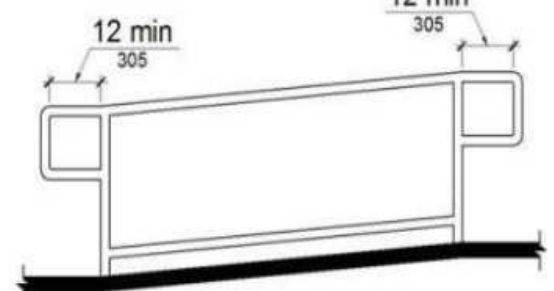


FIGURE 11B-505.10.1 TOP AND BOTTOM HANDRAIL EXTENSION AT RAMPS

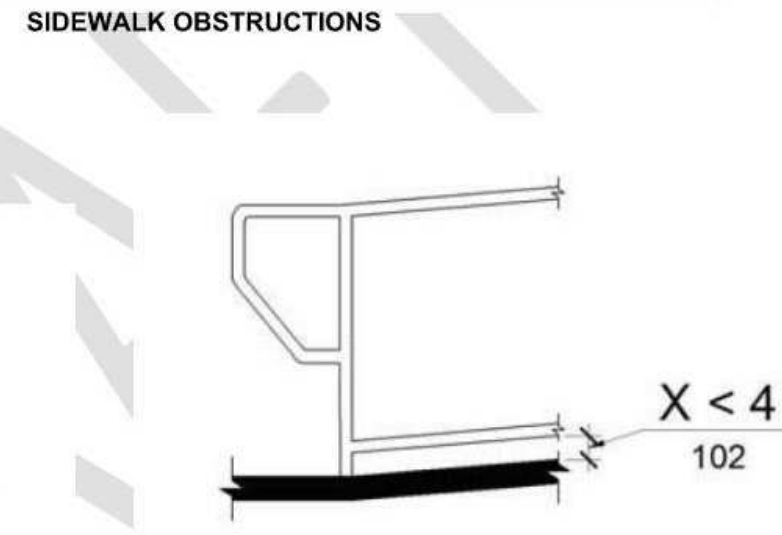
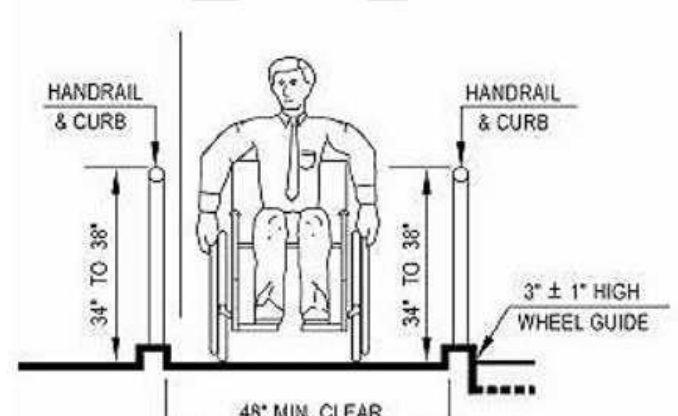
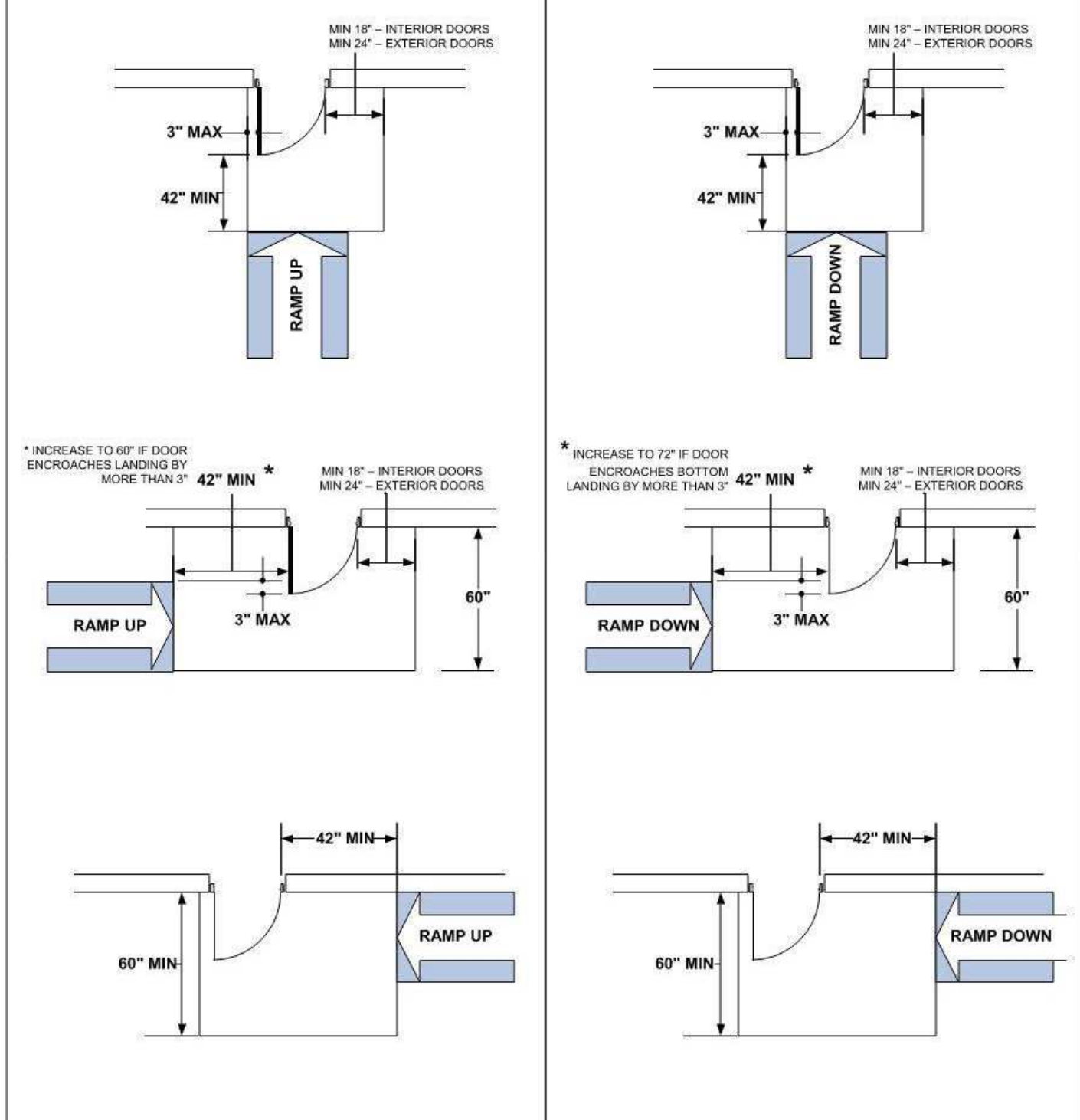


FIGURE 11B-405.9.2 CURB OR BARRIER EDGE PROTECTION



RAMPS AND HANDRAILS

DOORWAYS AT RAMP LANDINGS



DOORWAYS AT TOP LANDING SPACE OF A RAMP

DOORWAYS AT BOTTOM LANDING SPACE OF A RAMP

ELEVATORS

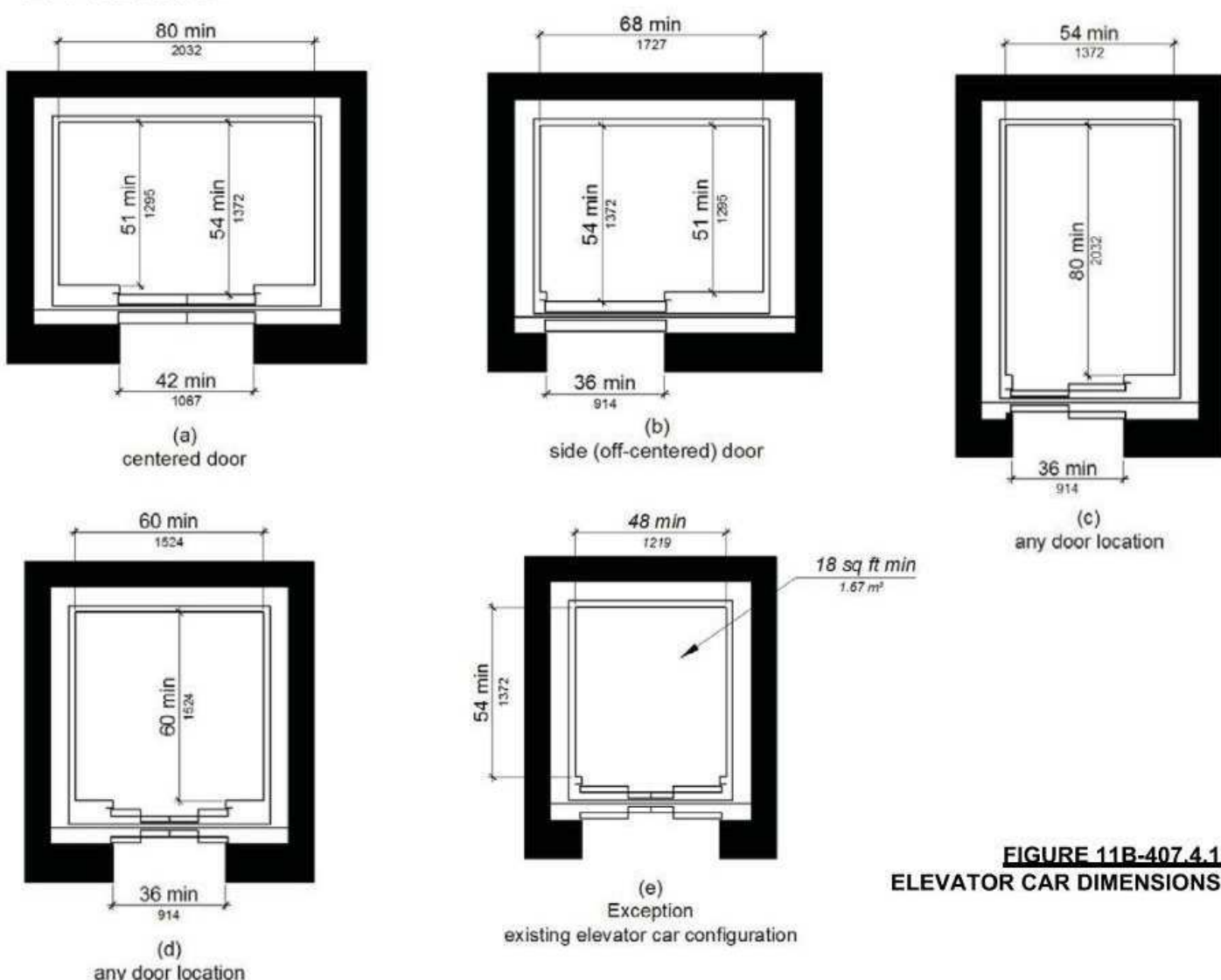


TABLE 11B-407.4.1 ELEVATOR CAR DIMENSIONS				
DOOR LOCATION	DOOR CLEAR WIDTH	INSIDE CAR, SIDE TO SIDE	INSIDE CAR, BACK WALL TO FRONT RETURN	INSIDE CAR, BACK WALL TO INSIDE FACE OF DOOR
Centered	42 inches	80 inches	51 inches	54 inches
Side (off-centered)	36 inches	68 inches	51 inches	54 inches
Any	36 inches	54 inches	80 inches	80 inches
Any	36 inches	60 inches	60 inches	60 inches

- A tolerance of minus 5/8 inch (15.8 mm) is permitted.
- Other car configurations that provide a turning space complying with Section 11B-304 with the door closed shall be permitted.

ELEVATORS

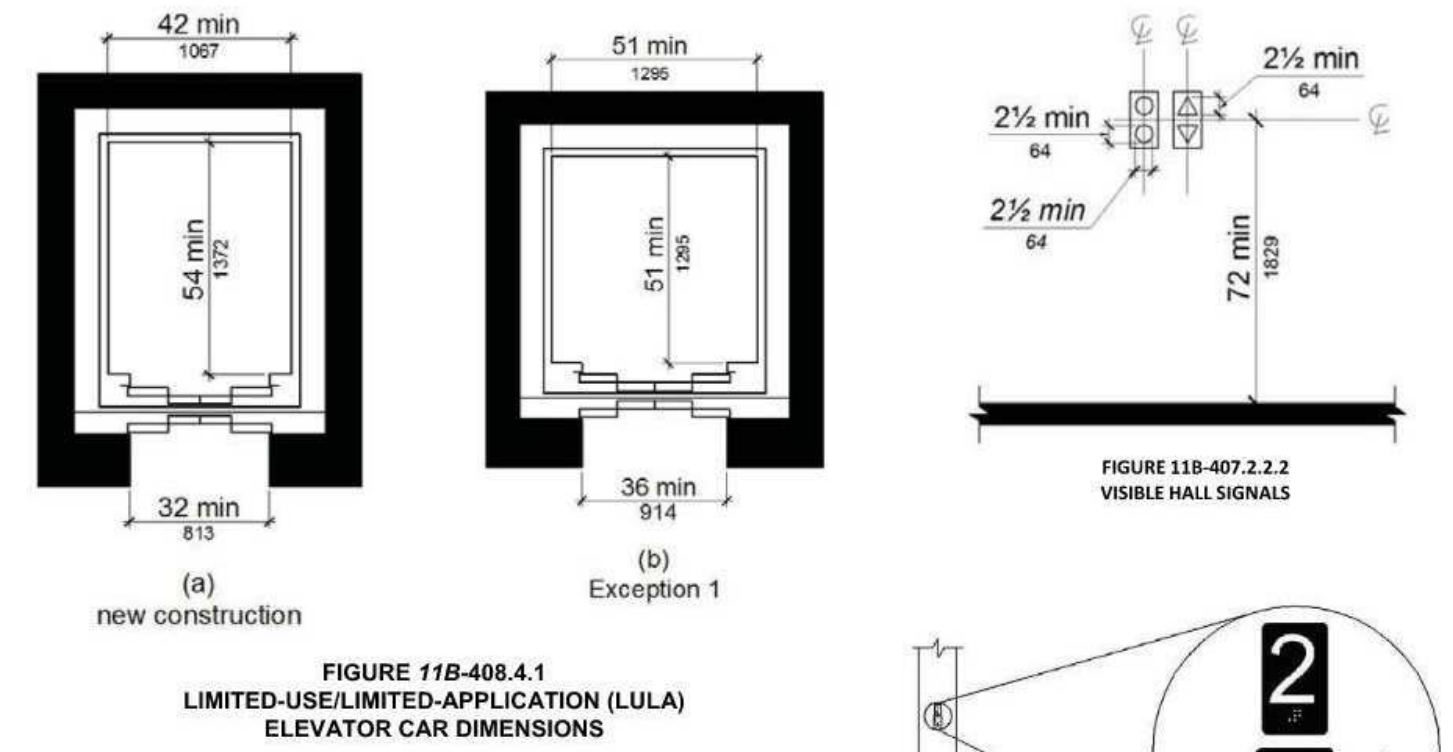


FIGURE 11B-408.4.1 LIMITED-USE/LIMITED-APPLICATION (LULA) ELEVATOR CAR DIMENSIONS

Door and signal timing. The minimum acceptable time from notification that a car is answering a call or notification of the car assigned at the means for the entry of destination information until the doors of that car start to close shall be calculated from the following equation:

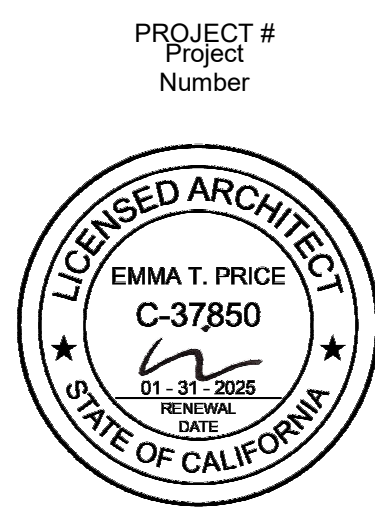
$$T = D / (1.5 \text{ ft/s}) \text{ or } T = D / (455 \text{ mm/s}) = 5 \text{ seconds minimum where } T \text{ equals the total time in seconds and } D \text{ equals the distance (in feet or millimeters) from the point in the lobby or corridor 60 inches (1524 mm) directly in front of the farthest call button controlling that car to the centerline of its hoistway door. (11B-407.3.4)}$$

- Exceptions:
- For cars with in-car lanterns, T shall be permitted to begin when the signal is visible from the point 60 inches (1524 mm) directly in front of the farthest call button and the audible signal is sounded.
 - Destination-oriented elevators shall not be required to comply with Section 11B-407.3.4.

Door delay. Elevator doors shall remain fully open in response to a call for 5 seconds minimum. (11B-407.3.5)

NO.	DATE	DESCRIPTION
1	04/18/2024	AL FRESCO PERMIT

ADA NOTES



ACCESSIBILITY DETAILS FOR SIGNS



FIGURE 11B-703.7.2.1
INTERNATIONAL
SYMBOL OF
ACCESSIBILITY
(ISA)



FIGURE 11B-703.7.2.2
INTERNATIONAL SYMBOL
OF TTY

11B-703.7.2.2 International Symbol of TTY. The International Symbol of TTY shall comply with Figure 11B-703.7.2.2

Volume control telephones. Telephones with a volume control shall be identified by a pictogram of a telephone handset with radiating sound waves on a square field such as shown in Figure 11B-703.7.2.3



FIGURE 11B-703.7.2.3
VOLUME CONTROL
TELEPHONE

Assistive listening systems. Assistive listening systems shall be identified by the International Symbol of Access for Hearing Loss complying with Figure 11B-703.7.2.4

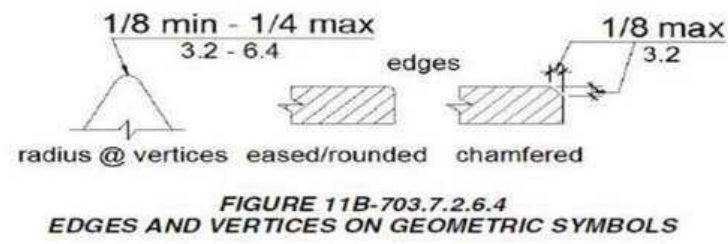


FIGURE 11B-703.7.2.6.4
EDGES AND VERTICES ON GEOMETRIC SYMBOLS

As a covered entity under Title II of the Americans with Disabilities Act, the City of Los Angeles does not discriminate on the basis of disability and, upon request, will provide reasonable accommodation to ensure equal access to its programs, services and activities.

Page 1 of 5

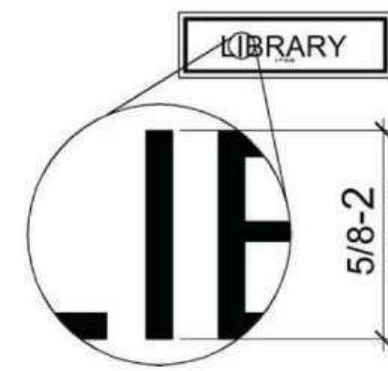


FIGURE 11B-703.2.5
HEIGHT OF RAISED CHARACTERS

11B-703 Signs

11B-703.1 General. Signs shall comply with Section 11B-703. Where both visual and tactile characters are required, either one sign with both visual and tactile characters, or two separate signs, one with visual, and one with tactile characters, shall be provided.

11B-703.1.1 Plan review and inspection. Signs as specified in Section 11B-703, or in other sections of this code, when included in the construction of new buildings or facilities, or when included, altered or replaced due to additions, alterations or renovations to existing buildings or facilities, and when a permit is required, shall comply with Sections 11B-703.1.1.1 and 11B-703.1.1.2.

11B-703.1.1.1 Plan review. Plans, specifications or other information indicating compliance with these regulations shall be submitted to the enforcing agency for review and approval.

11B-703.1.1.2 Inspection. Signs and identification devices shall be field inspected after installation and approved by the enforcing agency prior to the issuance of a final certificate of occupancy per Chapter 1, Division II, Section 111, or final approval where no certificate of occupancy is issued. The inspection shall include, but not be limited to, verification that Braille dots and cells are properly spaced and the size, proportion and type of raised characters are in compliance with these regulations.

MEASUREMENT RANGE	MINIMUM IN INCHES MAXIMUM IN INCHES
Dot base diameter	0.069 - 0.063
Distance between two dots in the same cell	0.100
Distance between corresponding dots in adjacent cells	0.300
Dot height	0.025 - 0.037
Distance between corresponding dots from one cell directly below	0.395 - 0.400

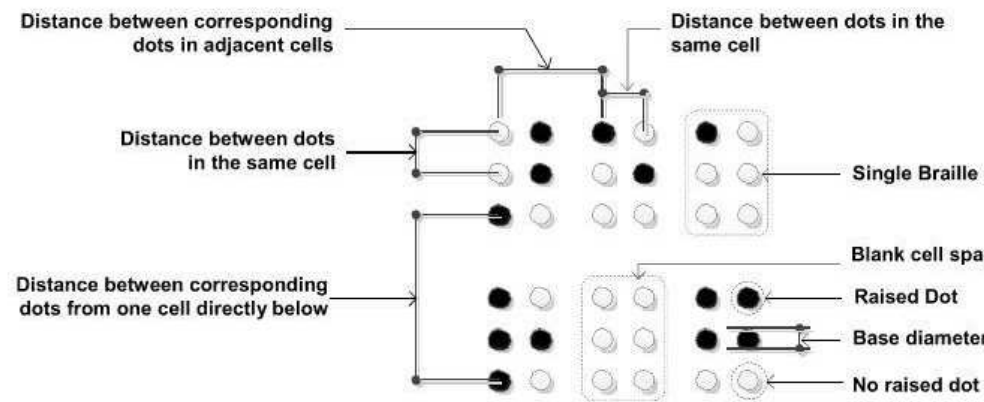


FIGURE 11B-703.3.1
BRAILLE MEASUREMENT

As a covered entity under Title II of the Americans with Disabilities Act, the City of Los Angeles does not discriminate on the basis of disability and, upon request, will provide reasonable accommodation to ensure equal access to its programs, services and activities.

Page 2 of 5

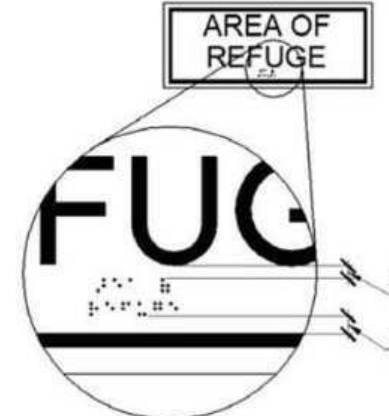


FIGURE 11B-703.3.2
POSITION OF BRAILLE

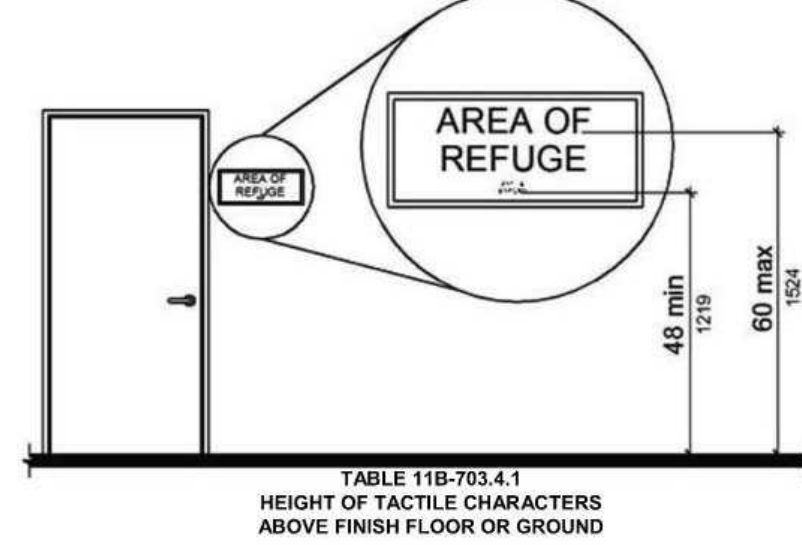


TABLE 11B-703.4.1
HEIGHT OF TACTILE CHARACTERS
ABOVE FINISH FLOOR OR GROUND

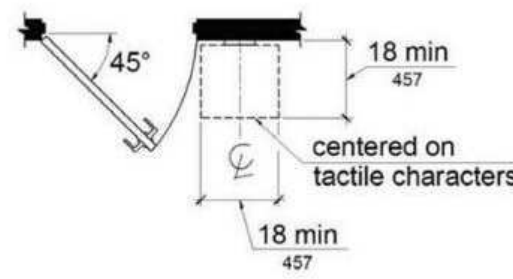
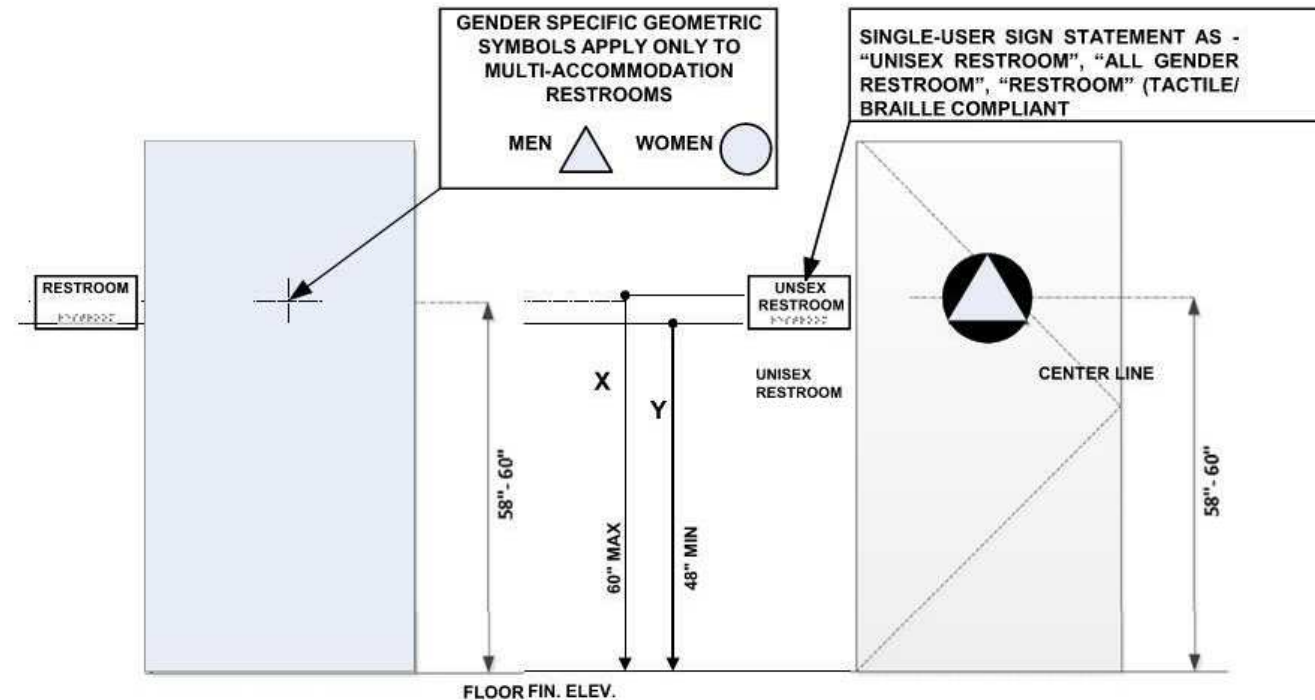


FIGURE 11B-703.4.2
LOCATION OF TACTILE SIGNS AT DOORS

As a covered entity under Title II of the Americans with Disabilities Act, the City of Los Angeles does not discriminate on the basis of disability and, upon request, will provide reasonable accommodation to ensure equal access to its programs, services and activities.

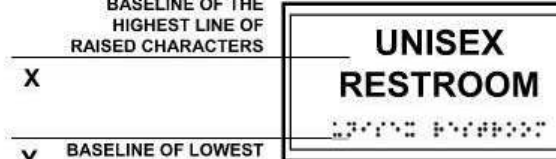
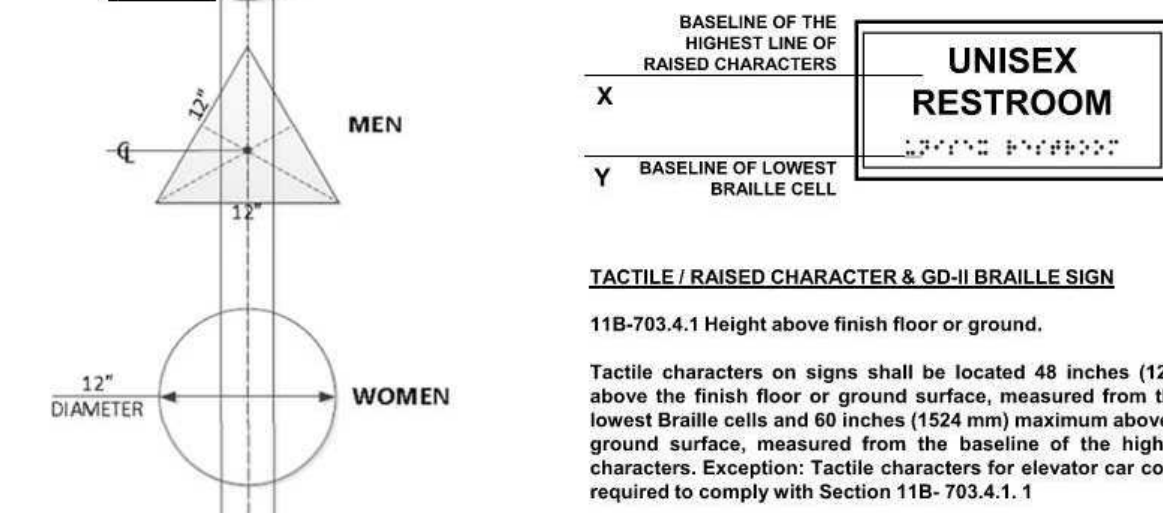
Page 3 of 5

TOILETS AND BATHING FACILITIES GEOMETRIC SYMBOLS



NOTE: PICTOGRAMS NOT REQUIRED

The provisions of CBC Chapter 11B require that a sanitary facility that is not specifically identified as for "men" or "women" (referred to in Chapter 11B as a "unisex" facility) have a geometric symbol on the door that is an equilateral triangle superimposed onto a circle. The "unisex" symbol is the only specific indicator required to be provided by Chapter 11B for a toilet facility that is available for use by all individuals. No pictogram, text, or braille is required on the symbol. (See attachment, Exhibit A.)



TACTILE / RAISED CHARACTER & GD-II BRAILLE SIGN

11B-703.4.1 Height above finish floor or ground. Tactile characters on signs shall be located 48 inches (1219 mm) minimum above the finish floor or ground surface, measured from the baseline of the lowest Braille cells and 60 inches (1524 mm) maximum above the finish floor or ground surface, measured from the baseline of the highest line of raised characters. Exception: Tactile characters for elevator car controls shall not be required to comply with Section 11B-703.4.1.

As a covered entity under Title II of the Americans with Disabilities Act, the City of Los Angeles does not discriminate on the basis of disability and, upon request, will provide reasonable accommodation to ensure equal access to its programs, services and activities.

Page 4 of 5

IDENTIFICATION OF ALL GENDER SINGLE-USER TOILET FACILITIES Compliant with the California Building Code (CBC) Chapter 11B

EXHIBIT A - Door Symbol (required by the CBC)

This image represents the door symbol that is required by CBC 11B-216.8 to identify an all-gender/unisex single-user toilet facility. The symbol must comply with the requirements of CBC 11B-703.7.2.6.3. No pictogram, text, or braille is required on the symbol.

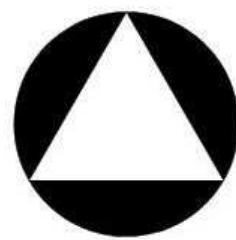


EXHIBIT B - Designation sign on wall

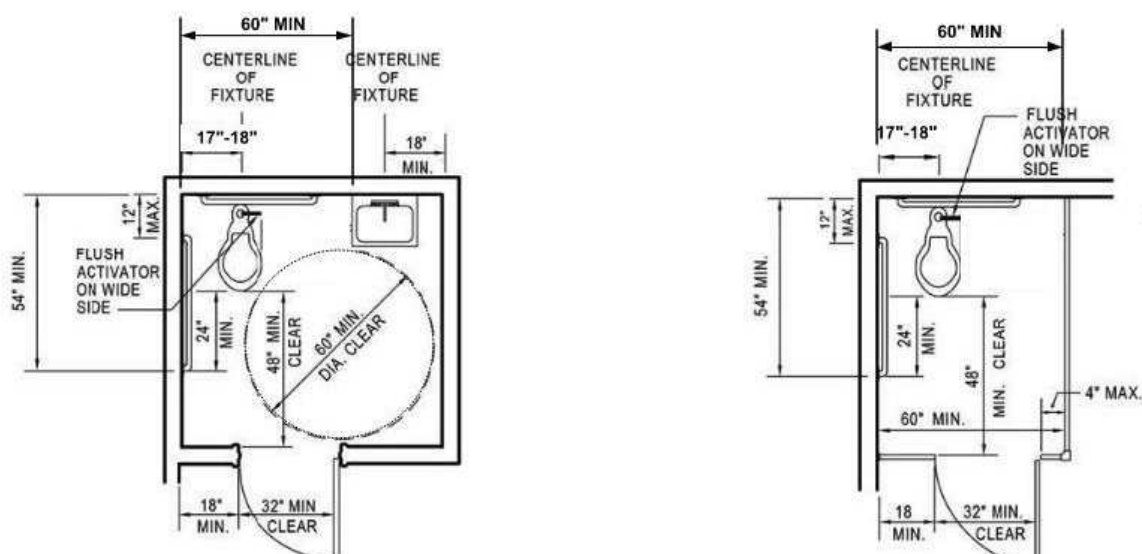
Designation signs are not required to be provided by the CBC or the 2010 ADAS. If provided, a designation sign adjacent to the door must comply with the scoping requirements of CBC 11B-216.2, and the technical requirements for raised characters (CBC 11B-703.2), braille (CBC 11B-703.3), visual characters (CBC 11B-703.5), and requirements for installation height and location (CBC 11B-703.4). No pictogram is required. The following signs illustrate acceptable examples for designation sign text:



As a covered entity under Title II of the Americans with Disabilities Act, the City of Los Angeles does not discriminate on the basis of disability and, upon request, will provide reasonable accommodation to ensure equal access to its programs, services and activities.

Page 5 of 5

ACCESSIBILITY DETAILS FOR RESTROOMS AND DRINKING FOUNTAINS



SINGLE-ACCOMMODATION TOILET FACILITY

ACCESSIBLE WATER CLOSET COMPARTMENT WITHIN
A MULTIPLE-ACCOMMODATION TOILET FACILITY

Doors shall not swing into the clear floor space or clearance required for any fixture. Other than the door to the accessible water closet compartment, a door in any position, may encroach into the turning space by 12 inches maximum. (11B-603.2.3) Exceptions: (2) Where the toilet room or bathing room is for individual use and a clear floor space complying with Section 11B-305.3 is provided within the room beyond the arc of the door swing, doors shall be permitted to swing into the clear floor space or clearance required for any fixture.

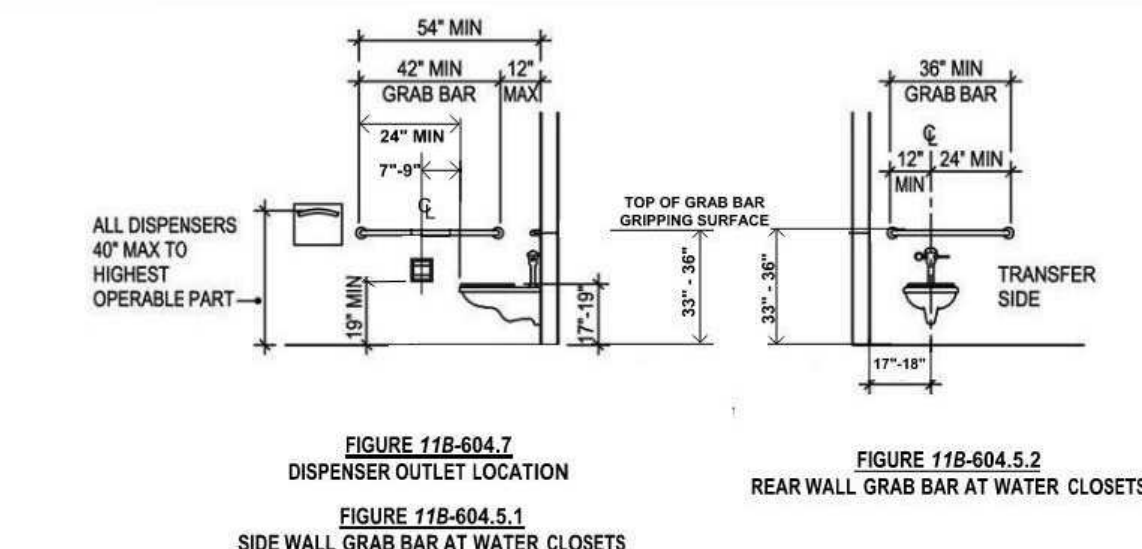


FIGURE 11B-604.7
DISPENSER OUTLET LOCATION

FIGURE 11B-604.5.2
REAR WALL GRAB BAR AT WATER CLOSETS

FIGURE 11B-604.5.1
SIDE WALL GRAB BAR AT WATER CLOSETS

THESE DIAGRAMS ILLUSTRATE THE SPECIFIC REQUIREMENTS OF THESE REGULATIONS AND ARE INTENDED ONLY AS AN AID FOR BUILDING DESIGN AND CONSTRUCTION.

As a covered entity under Title II of the Americans with Disabilities Act, the City of Los Angeles does not discriminate on the basis of disability and, upon request, will provide reasonable accommodation to ensure equal access to its programs, services and activities.

Page 1 of 5

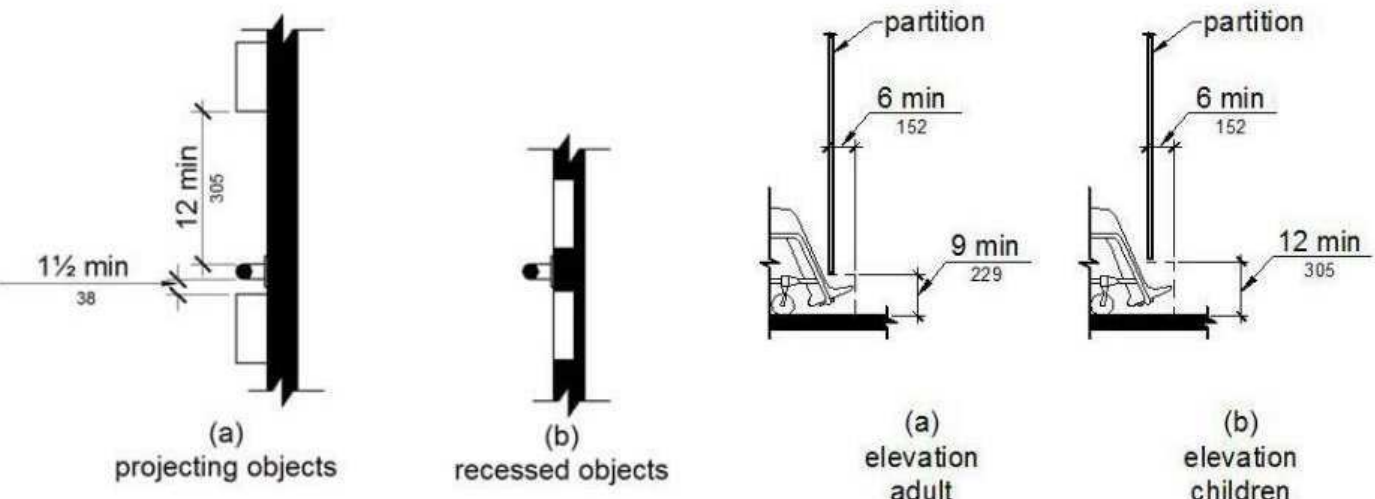


FIGURE 11B-609.3
SPACING OF GRAB BARS

FIGURE 11B-604.8.1.4
WHEELCHAIR ACCESSIBLE TOILET COMPARTMENT TOE CLEARANCE

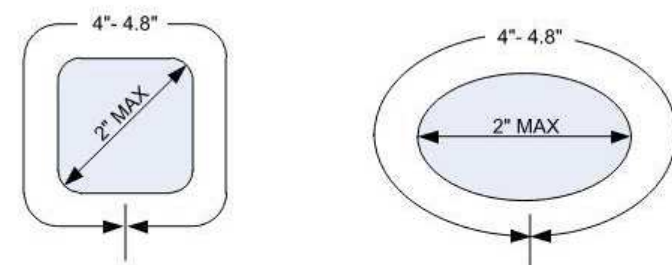


FIGURE 11B-609.2.2
GRAB BAR NON-CIRCULAR CROSS SECTION

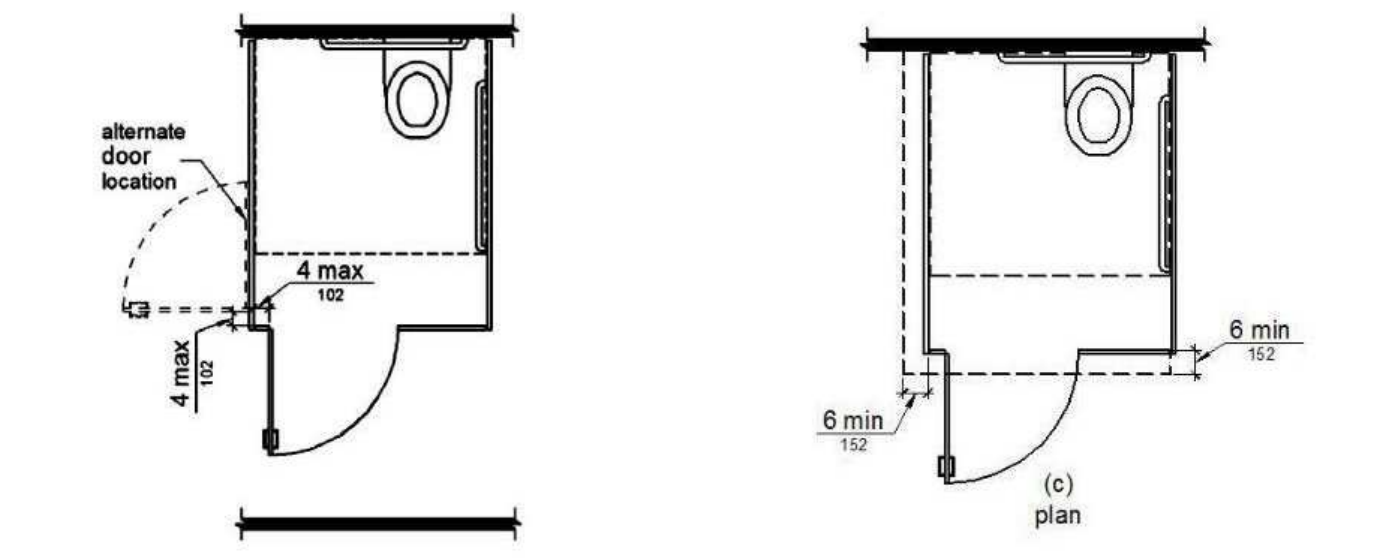


FIGURE 11B-604.8.1.2
WHEELCHAIR ACCESSIBLE TOILET COMPARTMENT DOORS

FIGURE 11B-604.8.1.4
WHEELCHAIR ACCESSIBLE TOILET COMPARTMENT TOE CLEARANCE

As a covered entity under Title II of the Americans with Disabilities Act, the City of Los Angeles does not discriminate on the basis of disability and, upon request, will provide reasonable accommodation to ensure equal access to its programs, services and activities.

Page 2 of 5

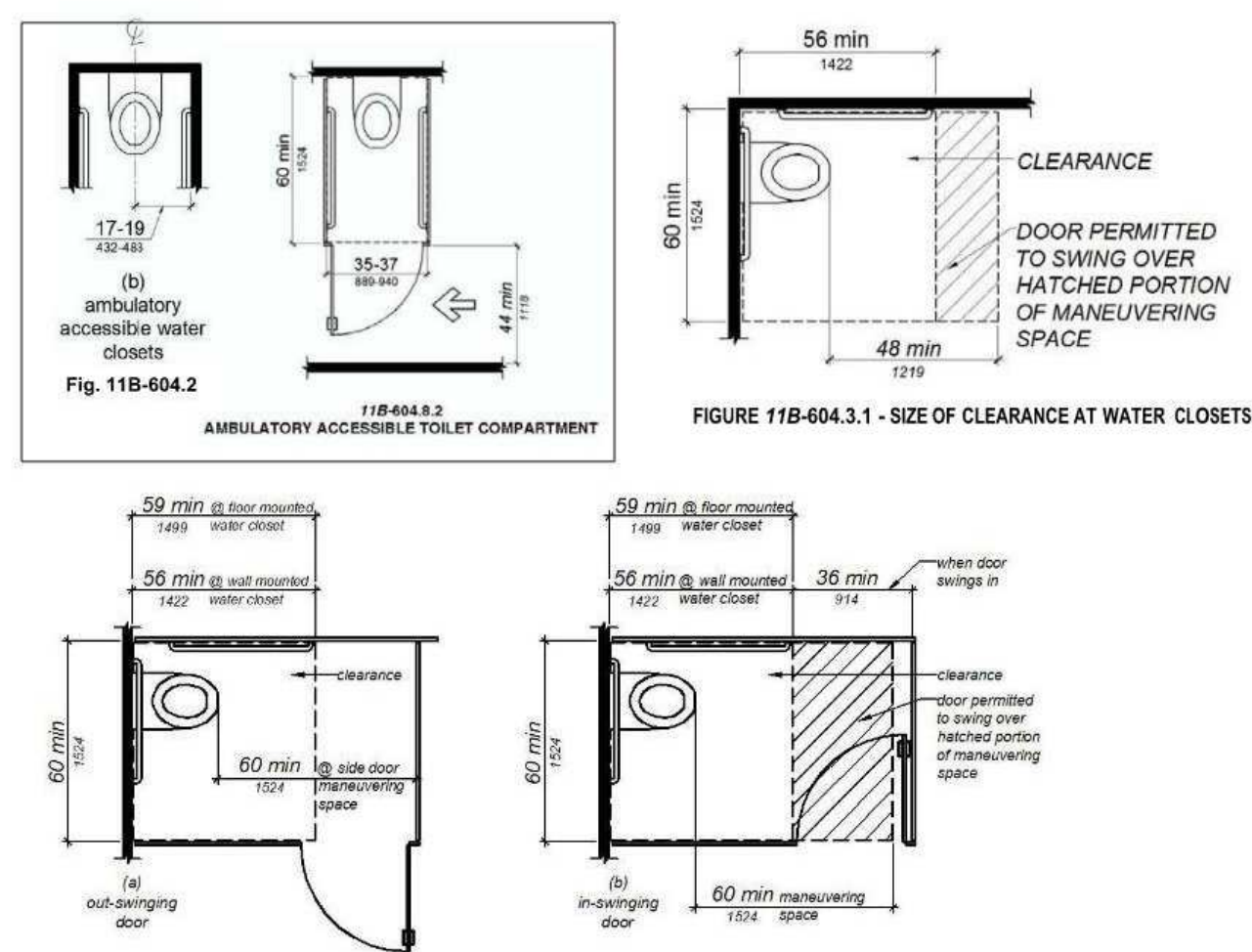


FIG. 11B-604.2
AMBULATORY ACCESSIBLE TOILET COMPARTMENT

FIGURE 11B-604.3.1 - SIZE OF CLEARANCE AT WATER CLOSETS

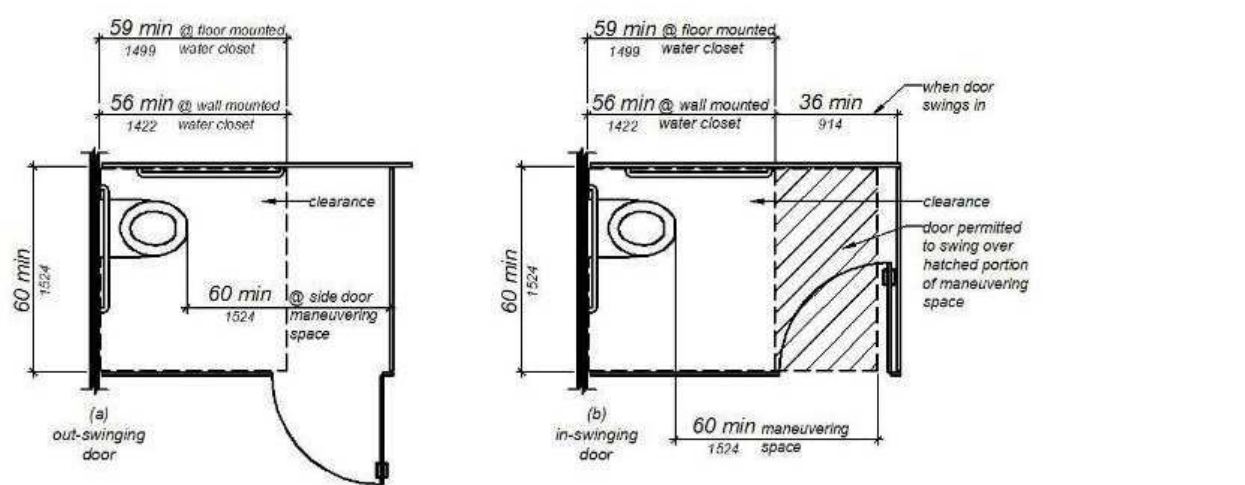


FIGURE 11B-604.8.1.1.2 - MANEUVERING SPACE WITH SIDE-OPENING DOOR

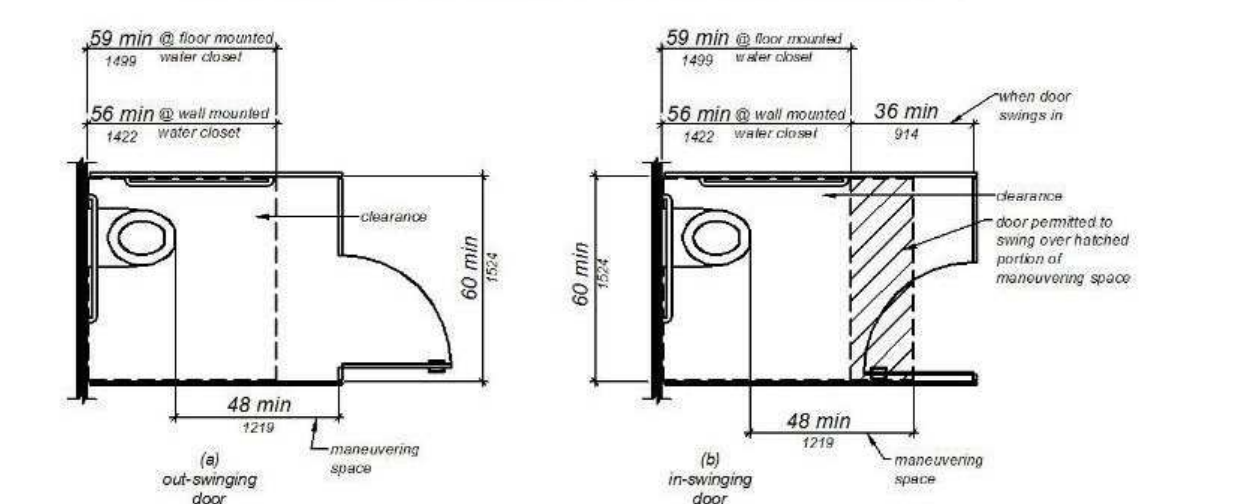


FIGURE 11B-604.8.1.1.3 - MANEUVERING SPACE WITH END-OPENING DOOR

As a covered entity under Title II of the Americans with Disabilities Act, the City of Los Angeles does not discriminate on the basis of disability and, upon request, will provide reasonable accommodation to ensure equal access to its programs, services and activities.

Page 3 of 5

EMMA T PRICE • ARCHITECT

3744 LANDA ST #6 LOS ANGELES, CA 90039
831.359.7098 EMMA@EMMATPRICE.COM

980 N. BROADWAY
LOS ANGELES CA
CAFE TRISTE

DESCRIPTION

AL FRESCO PERMIT

DATE

NO.

DATE

SCALE

PROJECT #

Project Number

DATE

ADA NOTES



A-004

5/6/2024 2:30:00 PM

Electric vehicle chargers
EV chargers shall comply with Section 11B-812.10. Operable parts and charging cord storage shall comply with Section 11B-309.

Point-of-sale devices. Where provided, point-of-sale devices shall comply with Sections 11B-707.2, 11B-707.3, 11B-707.7.2, and 11B-07.9.

Location. EV chargers shall be adjacent to, and within the projected width of, the vehicle space being served.

Exceptions: 11B-812.10.4

TABLE 11B-228.3.2.1
ELECTRIC VEHICLE CHARGING STATIONS FOR PUBLIC USE AND COMMON USE

TOTAL NUMBER OF EVCS AT A FACILITY ¹	MINIMUM NUMBER (by type) OF EVCS REQUIRED TO COMPLY WITH SECTION 11B-812	Standard Accessible	Ambulatory
1 to 4	1	0	0
5 to 25	1	1	0
26 to 50	1	1	1
51 to 75	1	2	2
76 to 100	1	3	3
101 and over	1, plus 1 for each 300, or fraction thereof, over 100	3, plus 1 for each 60, or fraction thereof, over 100	3, plus 1 for each 50, or fraction thereof, over 100

1. Where an EV charger can simultaneously charge more than one vehicle, the number of EVCS provided shall be considered equivalent to the number of electric vehicles that can be simultaneously charged.

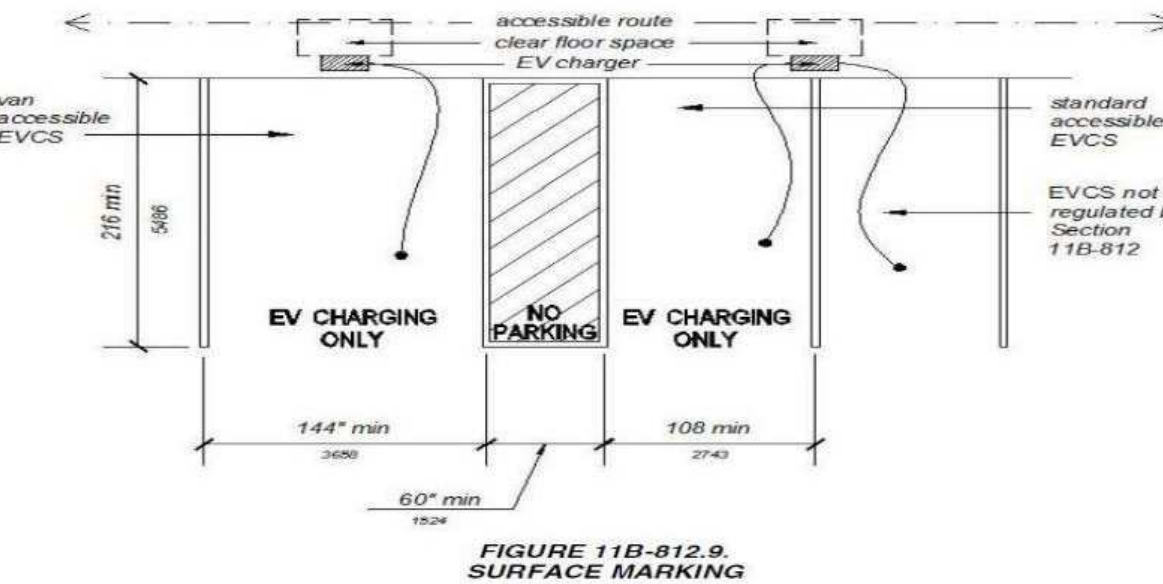


FIGURE 11B-812.9
SURFACE MARKING

As a covered entity under Title II of the Americans with Disabilities Act, the City of Los Angeles does not discriminate on the basis of disability and, upon request, will provide reasonable accommodation to ensure equal access to its programs, services and activities.

Page 7 of 7

ACCESSIBILITY DETAILS
FOR DOORS, MANEUVERING SPACES & ROUTES

UNLESS SPECIFICALLY STATED OTHERWISE, FIGURES ARE PROVIDED FOR INFORMATIONAL PURPOSES ONLY. (11B-104.3 FIGURES)

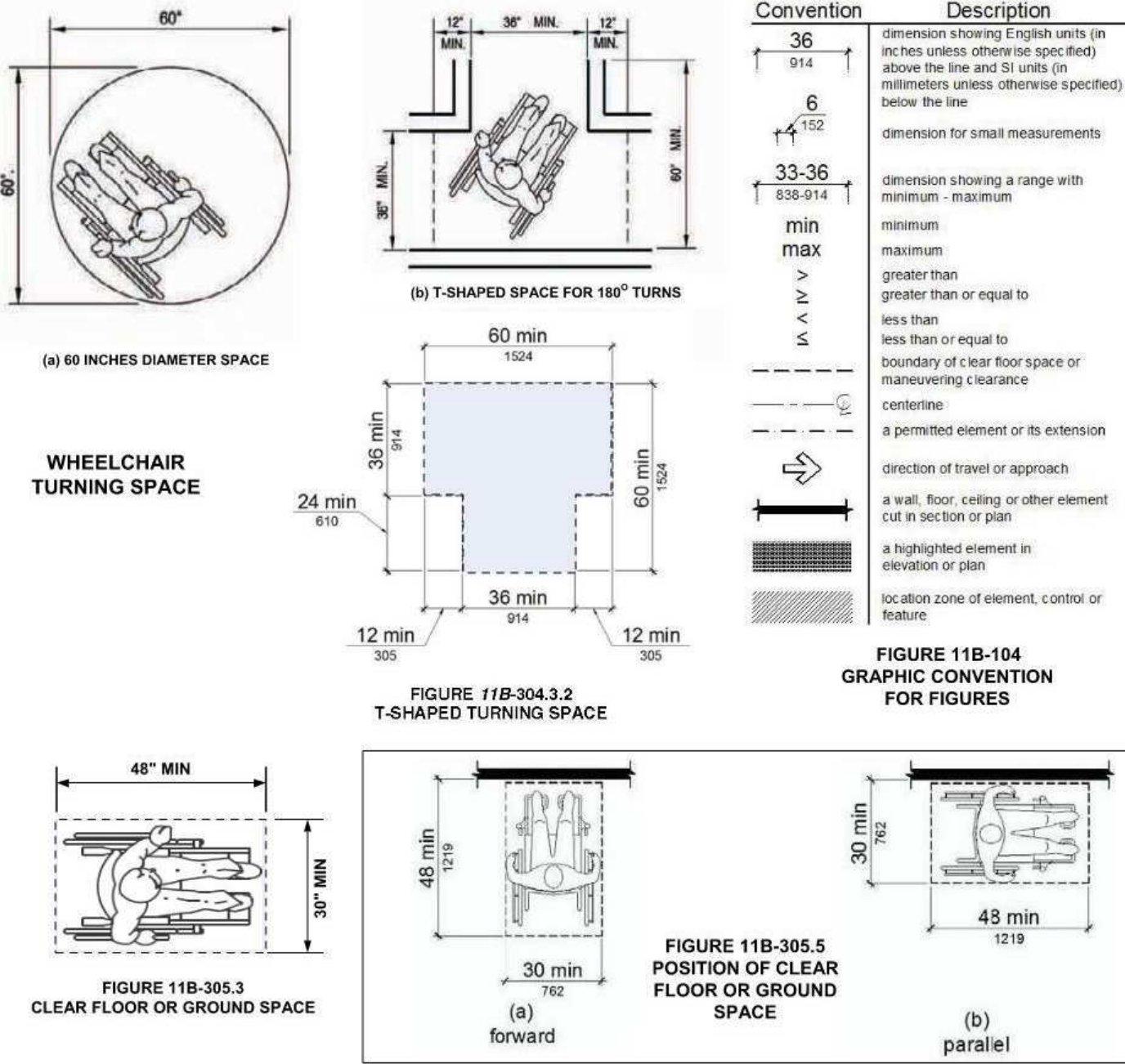


FIGURE 11B-305.3
CLEAR FLOOR OR GROUND SPACE

As a covered entity under Title II of the Americans with Disabilities Act, the City of Los Angeles does not discriminate on the basis of disability and, upon request, will provide reasonable accommodation to ensure equal access to its programs, services and activities.

Page 1 of 7

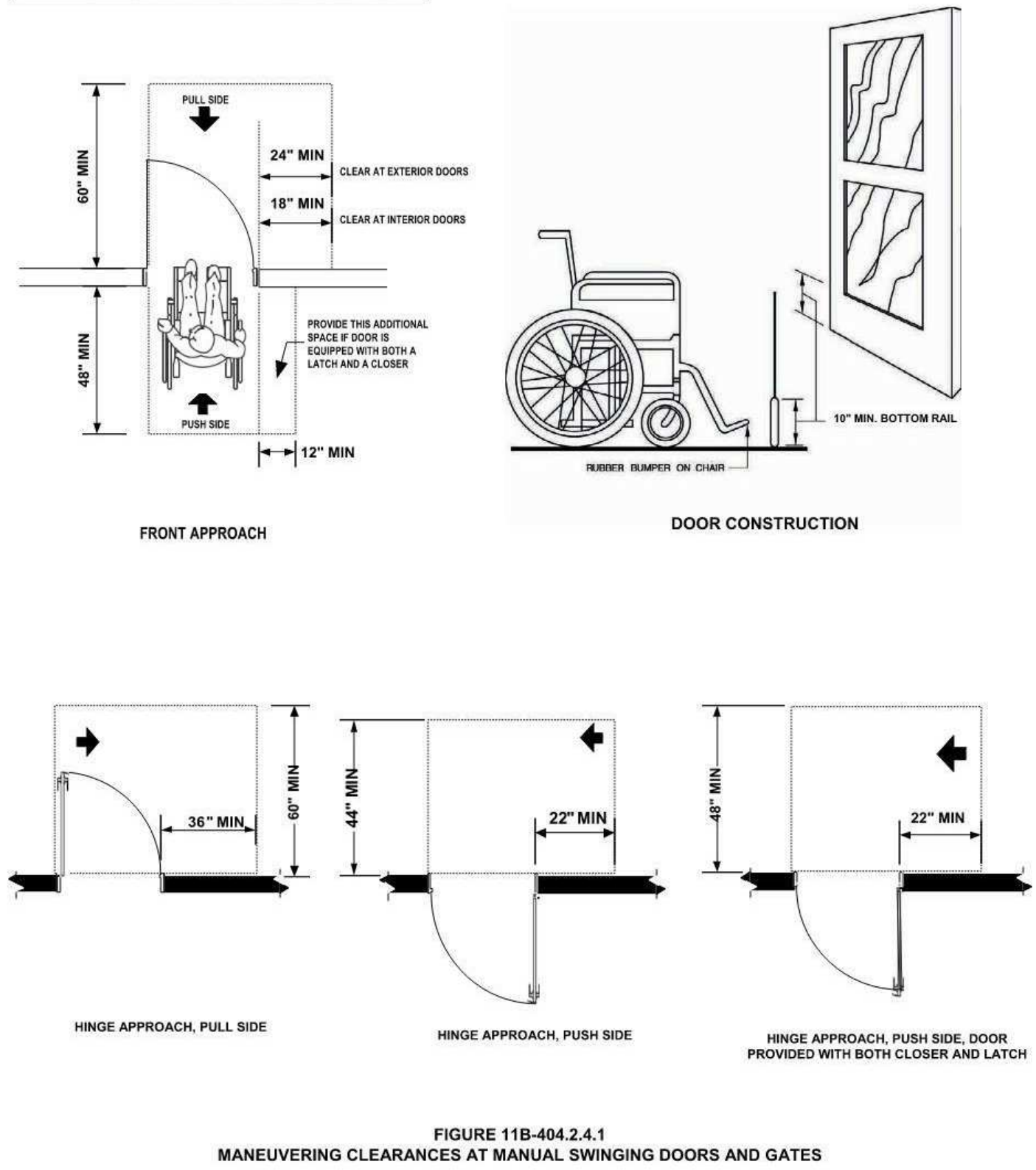


FIGURE 11B-404.2.4.1
MANEUVERING CLEARANCES AT MANUAL SWINGING DOORS AND GATES

As a covered entity under Title II of the Americans with Disabilities Act, the City of Los Angeles does not discriminate on the basis of disability and, upon request, will provide reasonable accommodation to ensure equal access to its programs, services and activities.

Page 2 of 7

DOORS & MANEUVERING SPACE

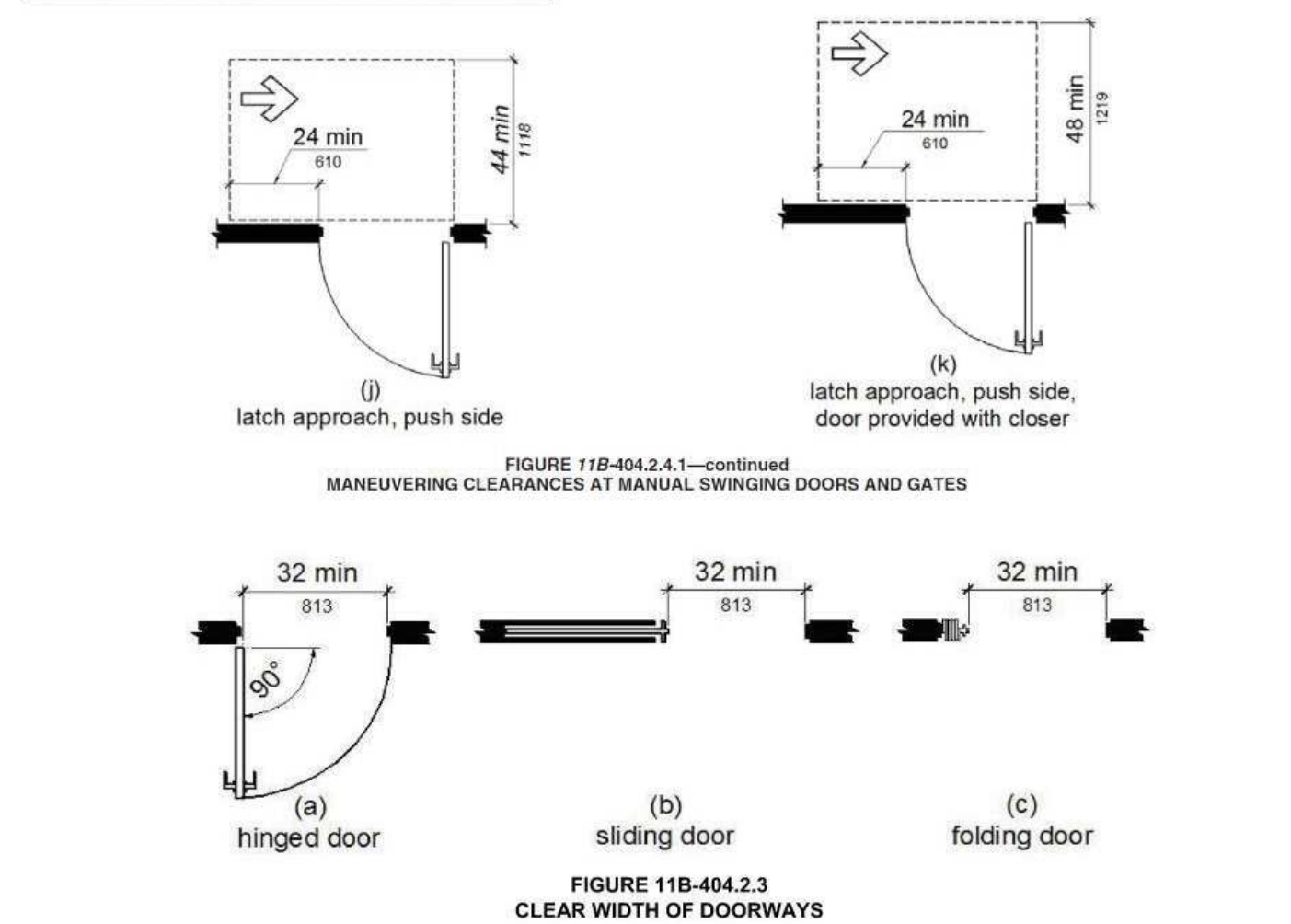


FIGURE 11B-404.2.3
CLEAR WIDTH OF DOORWAYS

TABLE 11B-404.2.3
MANEUVERING CLEARANCES AT MANUAL SWINGING DOORS AND GATES

TYPE OF USE	DOOR or GATE SIDE	MINIMUM MANEUVERING CLEARANCE
APPROACH DIRECTION		
From front	Pull	60 inches
From front	Push	48 inches
From hinge side	Pull	60 inches
From hinge side	Push	44 inches
From latch side	Pull	60 inches
From latch side	Push	44 inches

1. ADD 12 INCHES IF CLOSER AND LATCH ARE PROVIDED.
2. ADD 4 INCHES IF CLOSER AND LATCH ARE PROVIDED.
3. BEYOND HINGE SIDE.
4. ADD 4 INCHES IF CLOSER IS PROVIDED.
5. ADD 6 INCHES AT EXTERIOR SIDE OF EXTERIOR DOORS.

As a covered entity under Title II of the Americans with Disabilities Act, the City of Los Angeles does not discriminate on the basis of disability and, upon request, will provide reasonable accommodation to ensure equal access to its programs, services and activities.

Page 3 of 7

DOORS & MANEUVERING SPACE

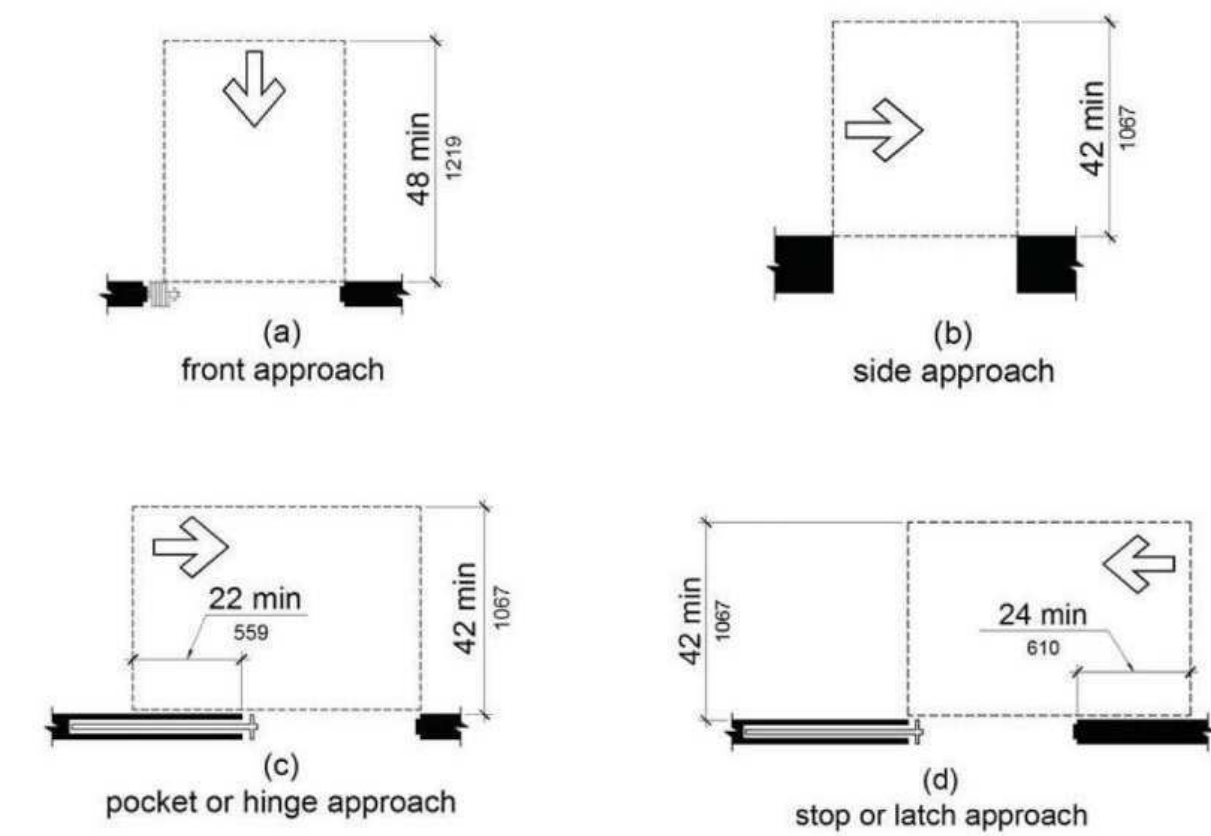


FIGURE 11B-404.2.4.2
MANEUVERING CLEARANCES AT DOORWAYS WITHOUT DOORS, SLIDING DOORS, GATES, AND FOLDING DOORS

TABLE 11B-404.2.4.2
MANEUVERING CLEARANCES AT DOORWAYS WITHOUT DOORS OR GATES
MANUAL SLIDING DOORS AND MANUAL FOLDING DOORS

Approach direction	Perpendicular to doorway	Parallel to doorway (beyond stop/latch side unless noted)
From Front	48 inches	0 inches
From Side ¹	42 inches	0 inches
From pocket/hinge side	42 inches	22 inches
From stop/latch side	42 inches	24 inches

1. Doorway with no door only.
2. Beyond pocket/hinge side.

As a covered entity under Title II of the Americans with Disabilities Act, the City of Los Angeles does not discriminate on the basis of disability and, upon request, will provide reasonable accommodation to ensure equal access to its programs, services and activities.

Page 4 of 7

DOORS & MANEUVERING SPACE

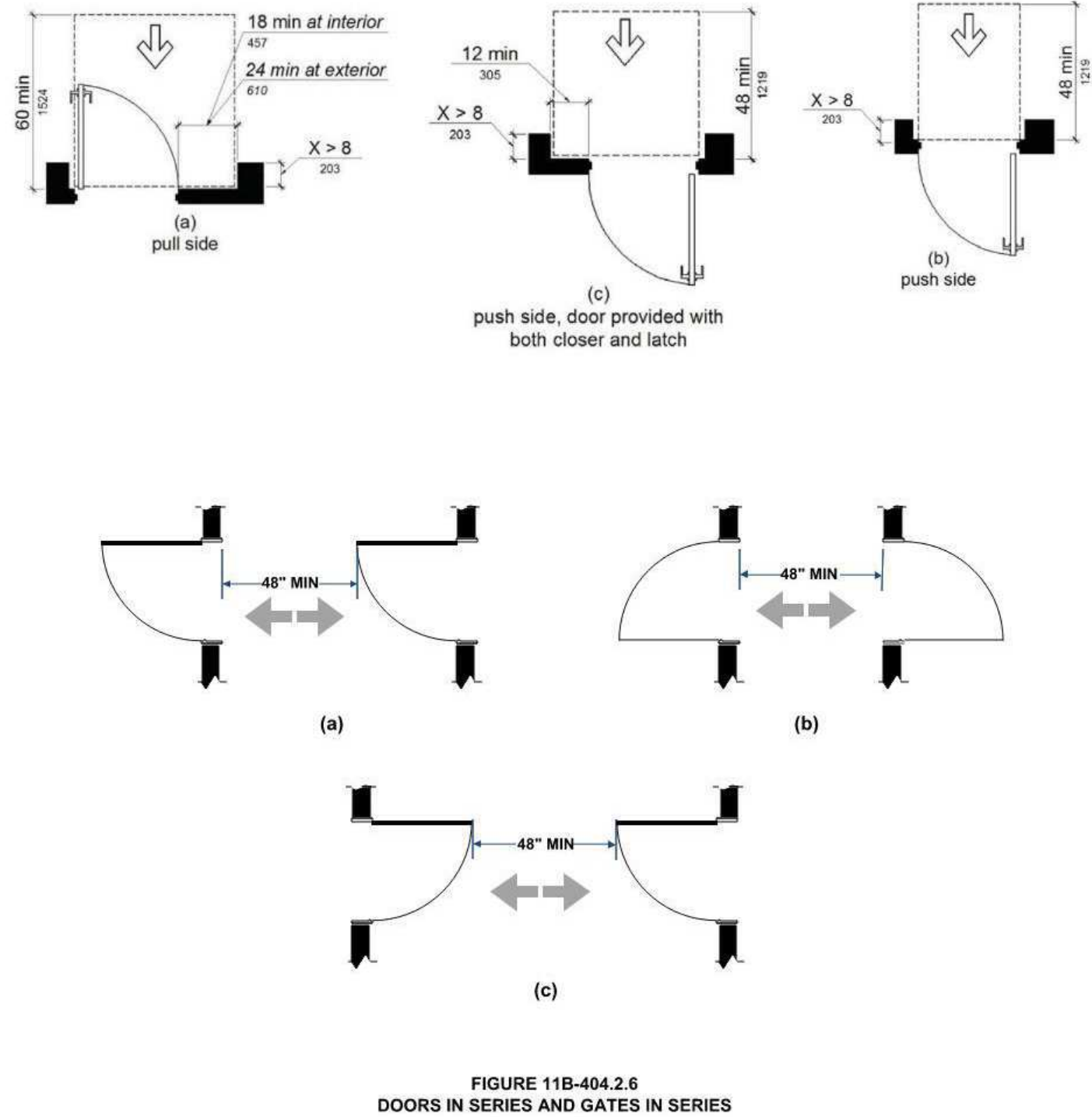


FIGURE 11B-404.2.6
DOORS IN SERIES AND GATES IN SERIES

As a covered entity under Title II of the Americans with Disabilities Act, the City of Los Angeles does not discriminate on the basis of disability and, upon request, will provide reasonable accommodation to ensure equal access to its programs, services and activities.

Page 5 of 7

ACCESSIBLE ROUTES

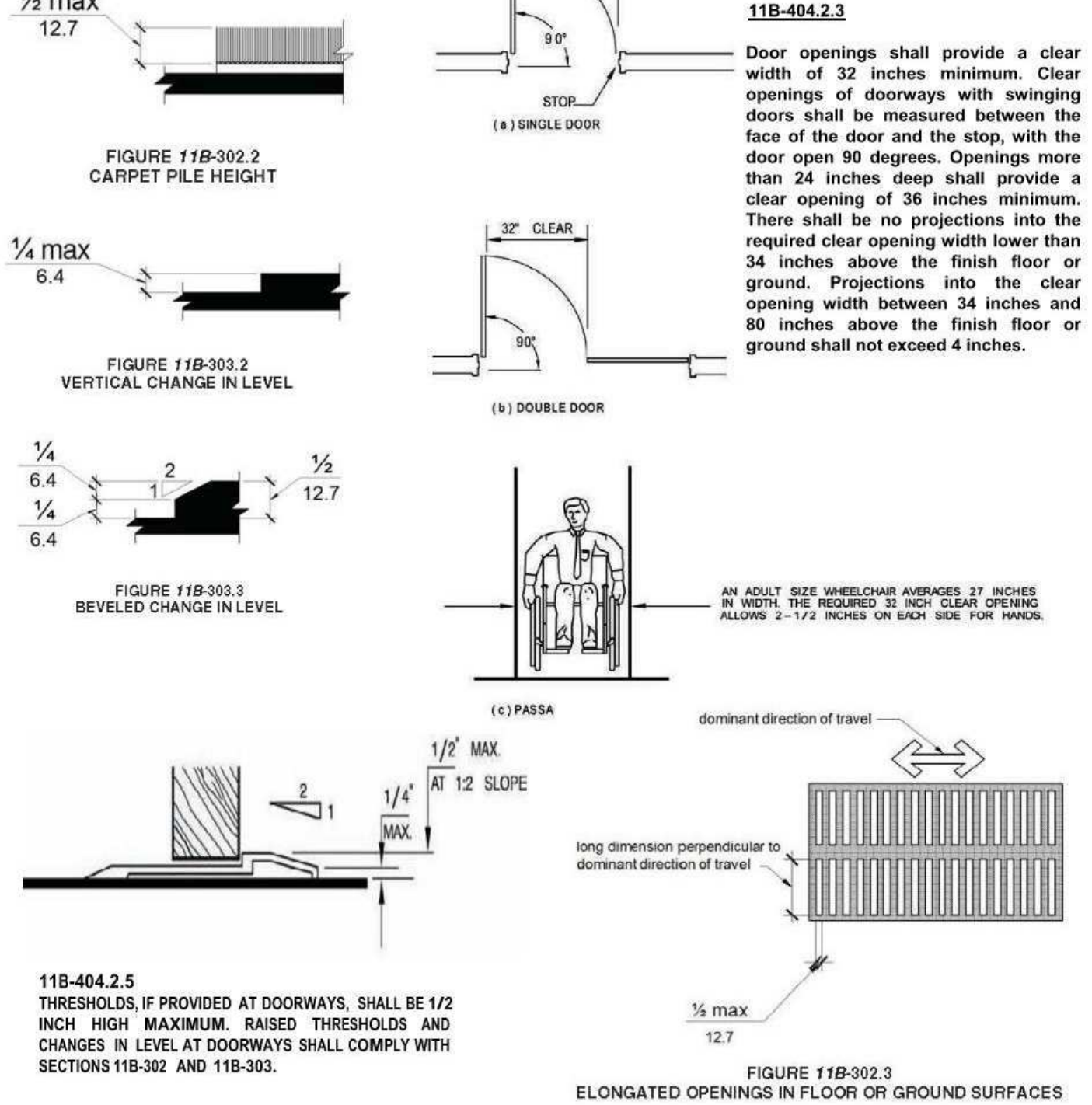


FIGURE 11B-403.5.1
CLEAR WIDTH OF AN ACCESSIBLE ROUTE

As a covered entity under Title II of the Americans with Disabilities Act, the City of Los Angeles does not discriminate on the basis of disability and, upon request, will provide reasonable accommodation to ensure equal access to its programs, services and activities.

Page 6 of 7

ACCESSIBLE ROUTES

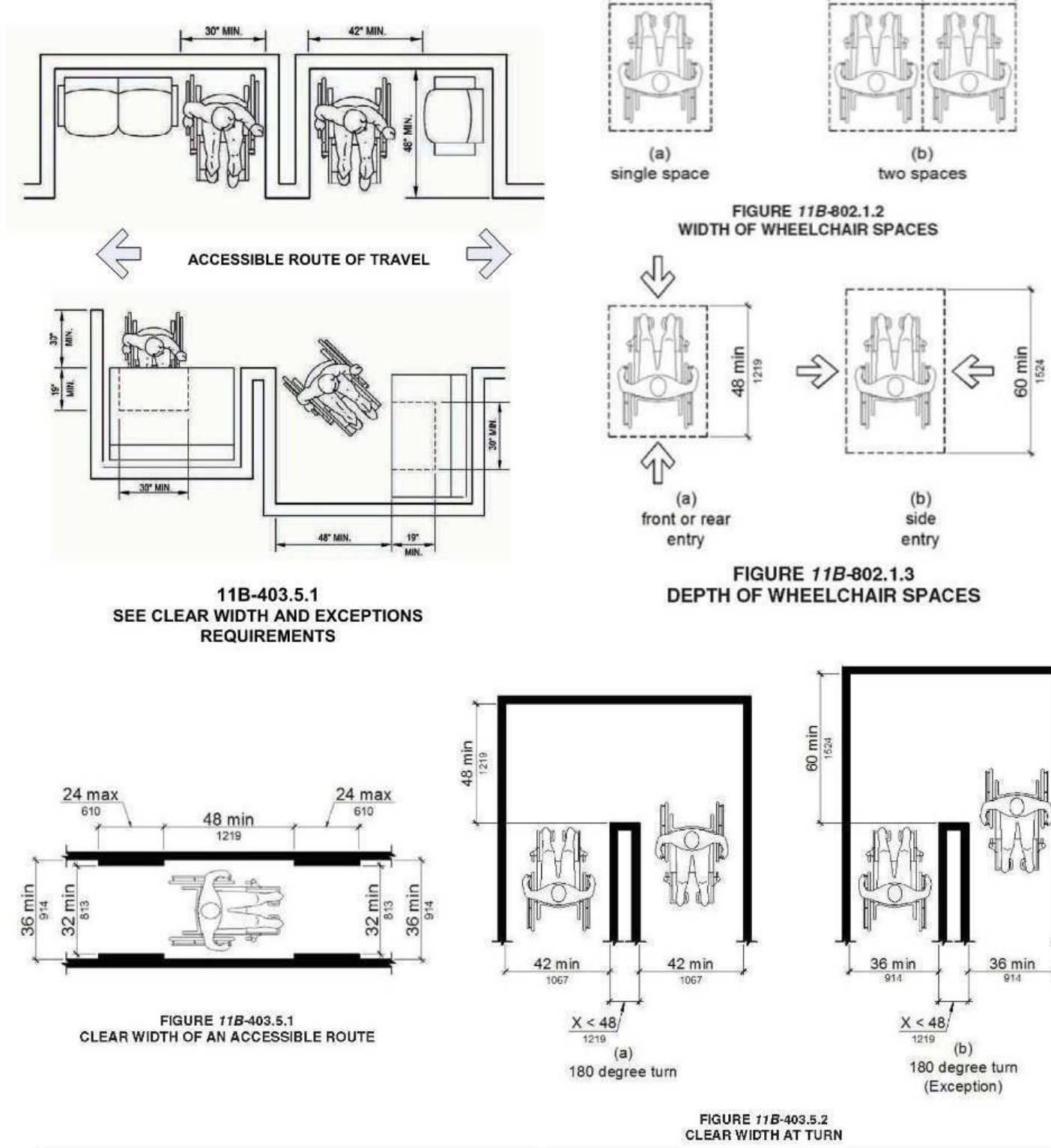


FIGURE 11B-802.1.3
DEPTH OF WHEELCHAIR SPACES

As a covered entity under Title II of the Americans with Disabilities Act, the City of Los Angeles does not discriminate on the basis of disability and, upon request, will provide reasonable accommodation to ensure equal access to its programs, services and activities.

Page 7 of 7

EMMA T PRICE • ARCHITECT

3744 LANDA ST #8 LOS ANGELES, CA 90039
831.359.7098 EMMA@EMMATPRICE.COM

980 N. BROADWAY
LOS ANGELES CA

CAFE TRISTE

DESCRIPTION
AL FRESCO PERMIT

DATE
04/18/2024

NO.
1

ADA NOTES

PROJECT #
Number

LICENSED ARCHITECT
EMMA T. PRICE
C-37850
01-31-2008
RENEWAL DATE
STATE OF CALIFORNIA

A-006

5/6/2024 2:30:10 PM

PLUMBING FIXTURE SCHEDULE				
Type	Count	Description	Finish	Comments
Mark	Count	Description	Finish	Comments
P1	1	TROUGH SINK @ LAVATORY	Concrete	EXISTING TO REMAIN
P2	1	HAND SINK	Stainless	EXISTING TO REMAIN
P3	1	1-COMP PREP SINK W/ DRAINBOARD	Stainless	EXISTING TO REMAIN
P4	1	3-COMP SINK W/ DRAINBOARDS	Stainless	EXISTING TO REMAIN
P5	2	TOILET	White	EXISTING TO REMAIN
P6	1	URINAL	White	EXISTING TO REMAIN
P7	1	MOP SINK	Stainless	EXISTING TO REMAIN
P8	1	GLASS WASHER	Stainless	EXISTING TO REMAIN
P9	2	FLOOR SINK	Stainless	EXISTING TO REMAIN
P10	1	WALL-HUNG LAVATORY SINK	White	EXISTING TO REMAIN

BUILDING AREA CALCULATIONS:
1397 SF TOTAL INTERIOR
296 SF TOTAL EXTERIOR

OCCUPANT LOAD PER LAPC SEC 422.1 TABLE 4-1 (PLUMBING COUNT)

INDOOR DINING AREA	= 515 SF / 30 SF PER OCC.	= 18 PEOPLE
OUTDOOR DINING	= 205 SF / 30 SF PER OCC.	= 7 PEOPLE
KITCHEN	= 127 SF / 150 SF PER OCC.	= 1 PERSON
STORAGE	= 298 SF / 4000 SF PER OCC.	= 1 PEOPLE

TOTAL PLUMBING OCCUPANT LOAD = 27 PEOPLE

PLUMBING FIXTURE CALCULATIONS PER LAPC SEC 422.1 TABLE 4-1

OCCUPANT LOAD: 27 TOTAL
FEMALE: 14
MALE: 14

WATER CLOSETS: 2 TOTAL
FEMALE: 1
MALE: 1

URINALS: 1 TOTAL
LAVATORIES: 2 TOTAL
FEMALE: 1
MALE: 1

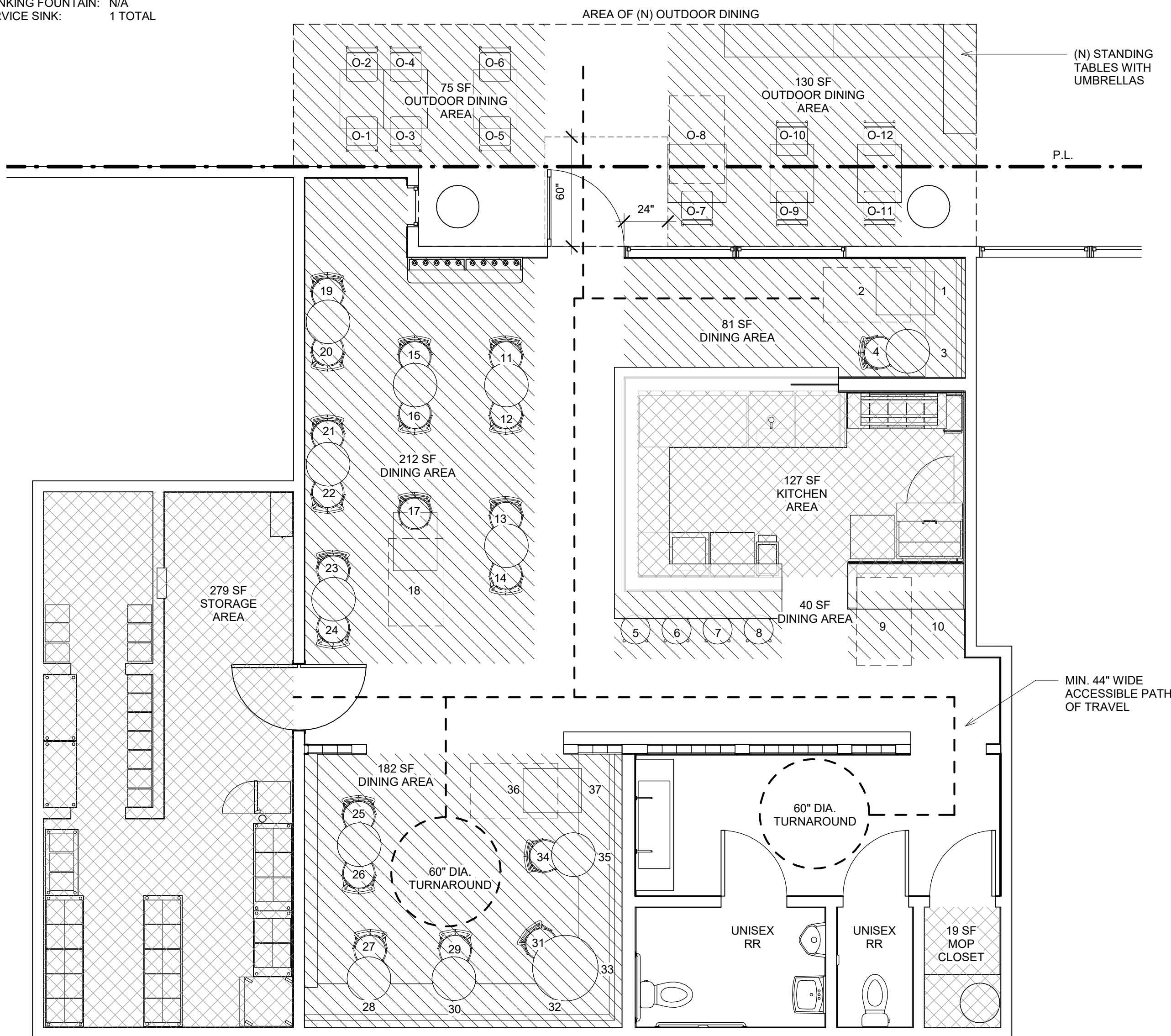
DRINKING FOUNTAIN: N/A
SERVICE SINK: 1 TOTAL

EQUIPMENT SCHEDULE				
WT	Count	Description	Finish	Comments
E1	1	36" REFRIGERATED SANDWICH PREP TABLE	Stainless	EXISTING TO REMAIN
E2	1	UC REFRIGERATOR	Stainless	EXISTING TO REMAIN
E3	1	UC KEGERATOR		EXISTING TO REMAIN
E7	2	72"L x 21"D Metro Shelving	Stainless	EXISTING TO REMAIN
E8	1	36"L x 21"D Metro Shelving	Stainless	EXISTING TO REMAIN
E9	1	48"L x 21"D Metro Shelving	Stainless	EXISTING TO REMAIN
E10	3	36"L x 18"D Metro Shelving	Stainless	EXISTING TO REMAIN
E13	1	24"X24" STAINLESS TABLE	Stainless	EXISTING TO REMAIN
E14	1	REACH-IN REFRIGERATOR		EXISTING TO REMAIN
E15	1	24" x 24" Glass Rack	Stainless	EXISTING TO REMAIN
E16	2	72" L x 12" D Wall Shelf, Stainless	Stainless	EXISTING TO REMAIN
E18	1	42" Tubular Wall Mounted Glass Rack	Stainless	EXISTING TO REMAIN
E19	1	Mini Freezer for Wine Sleeves		EXISTING TO REMAIN
E20	1	Low Boy Commercial Hot Water Heater - DEL 30		EXISTING TO REMAIN

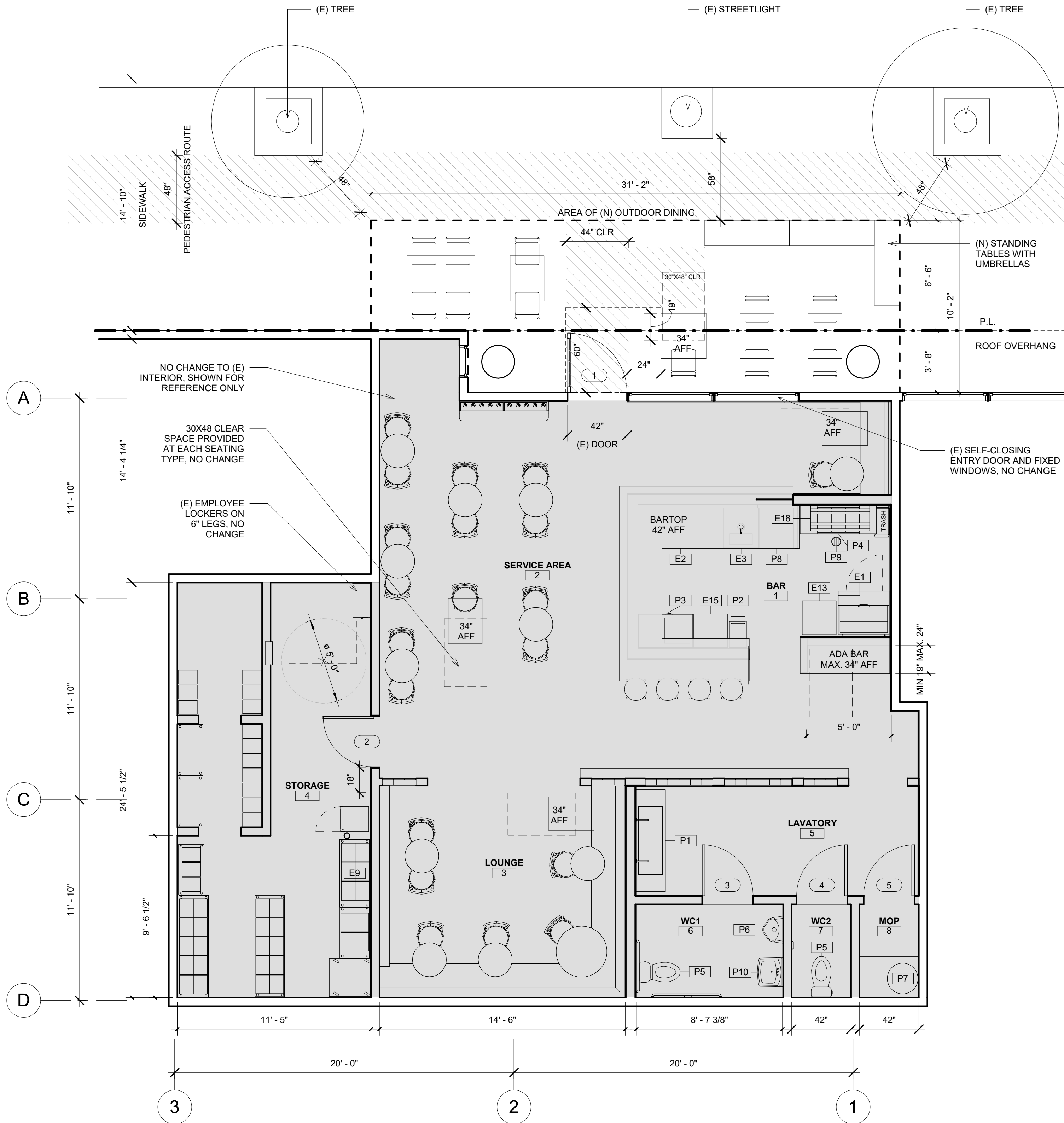
DOOR SCHEDULE						
Mark	Description	Width	Height	From Room: Name	To Room: Name	Comments
1	GLAZED ENTRY DOOR	3' - 6"	7' - 0"		SERVICE AREA	SELF-CLOSING, EXISTING TO REMAIN
2	SWING DOOR	3' - 0"	6' - 8"	SERVICE AREA	STORAGE	EXISTING TO REMAIN
3	SWING DOOR	3' - 0"	6' - 8"	LAVATORY	WC1	SELF-CLOSING, EXISTING TO REMAIN
4	SWING DOOR	3' - 0"	6' - 8"	LAVATORY	WC2	SELF-CLOSING, EXISTING TO REMAIN
5	SWING DOOR	3' - 0"	6' - 8"	LAVATORY	MOP	EXISTING TO REMAIN

ADA COMPLIANT SEATING
INDOOR SEATS PROVIDED
ADA INDOOR SEATS PROVIDED
OUTDOOR SEATS PROVIDED
ADA OUTDOOR SEATS PROVIDED

= 37
= 4 (4/37 = 10%)
= 12
= 1 (1/12 = 8%)



2 AREA CALCULATION & EGRESS PLAN
1/4" = 1'-0"



1 PROPOSED FLOOR PLAN
1/4" = 1'-0"

EMMA T PRICE • ARCHITECT

3744 LANDA ST #8 LOS ANGELES, CA 90039

831.359.7098 EMMA@EMMATPRICE.COM

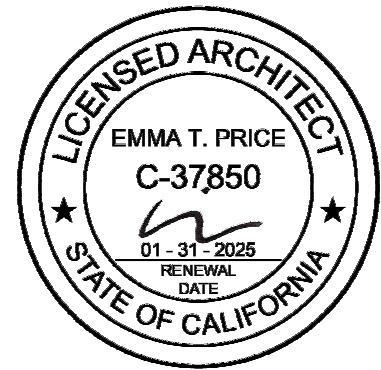
980 N. BROADWAY
LOS ANGELES CA

CAFE TRISTE

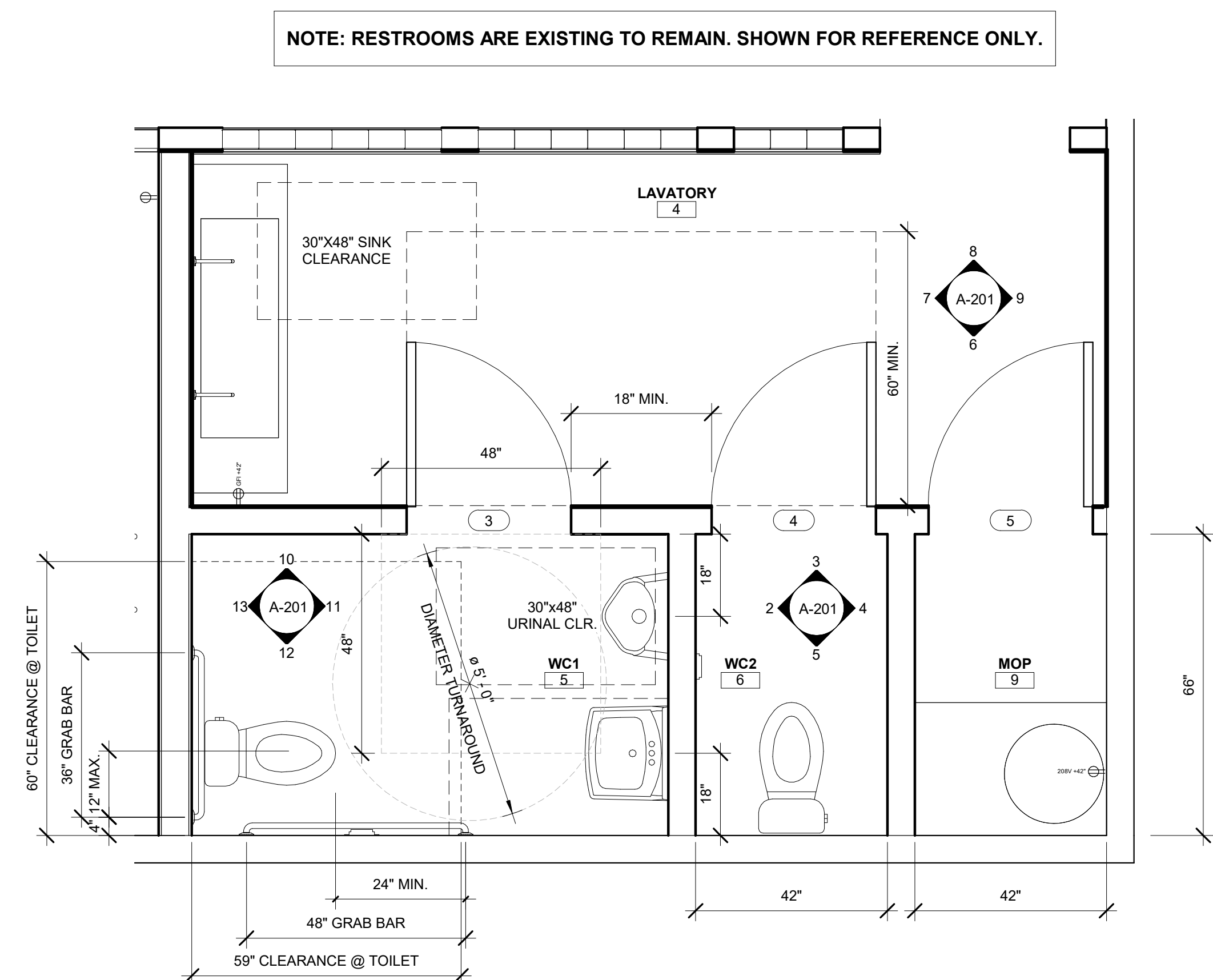
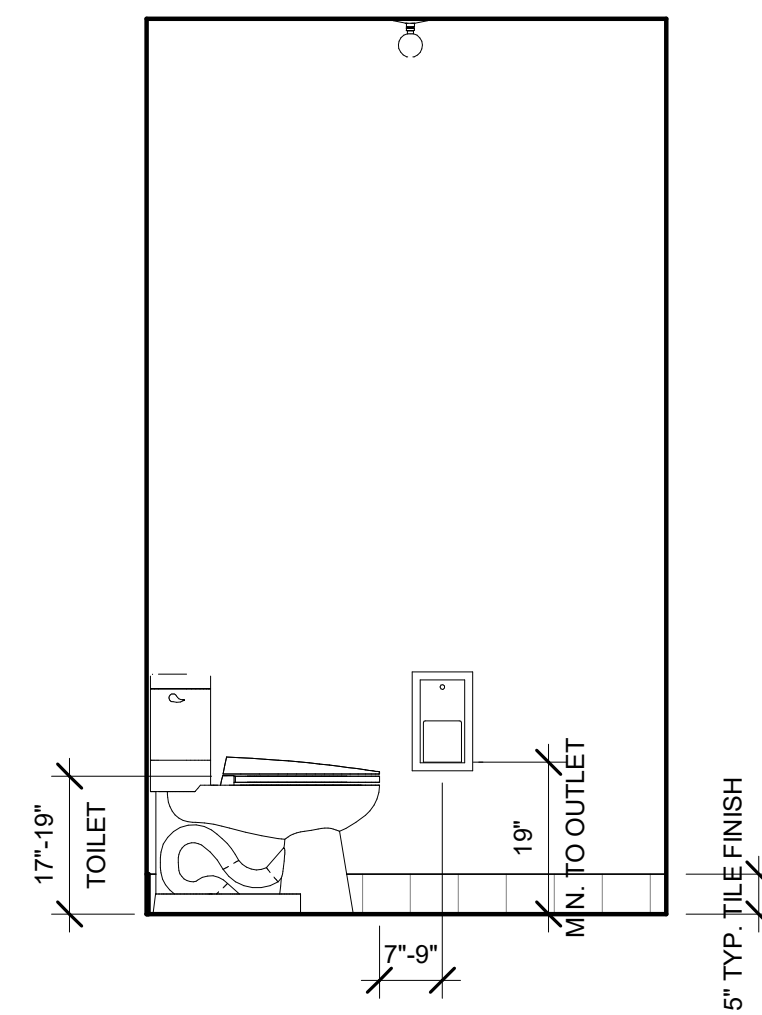
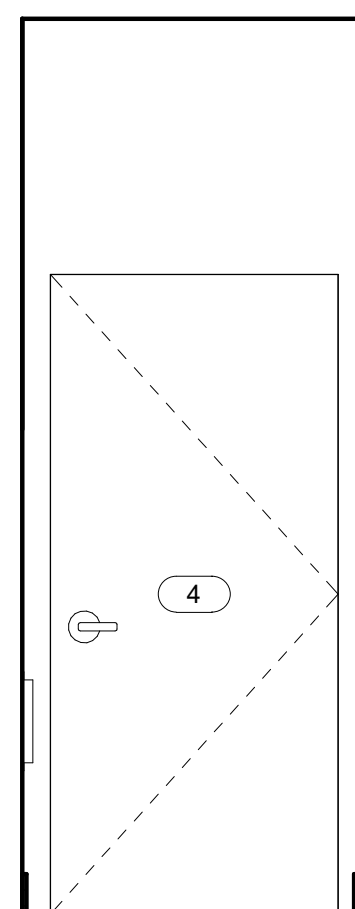
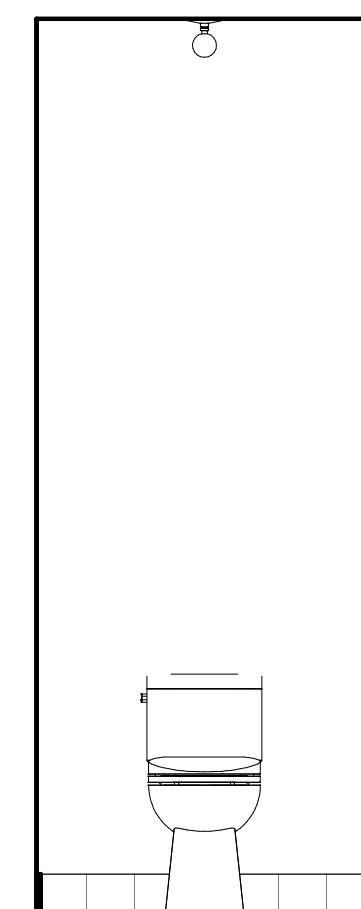
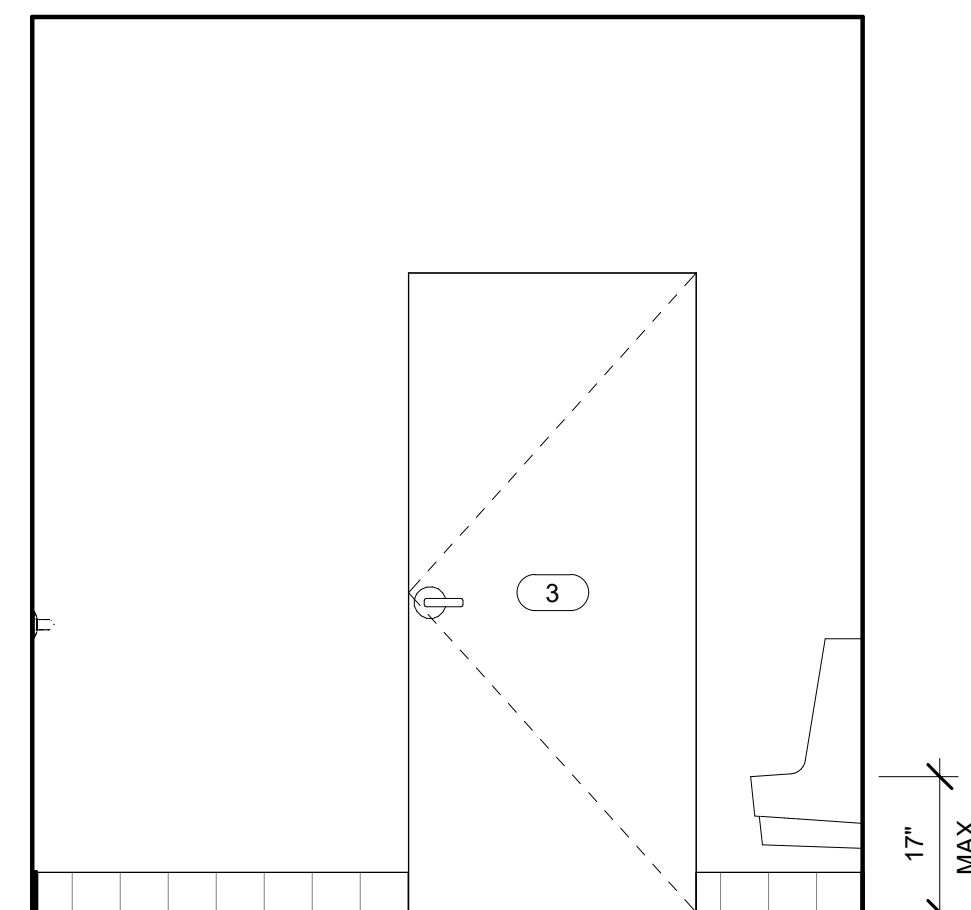
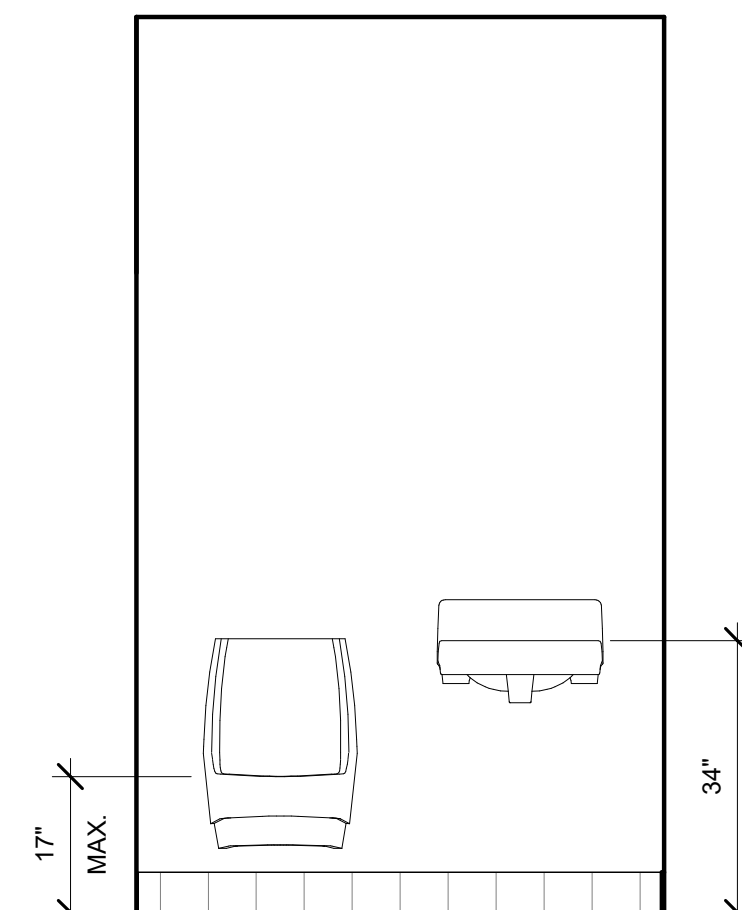
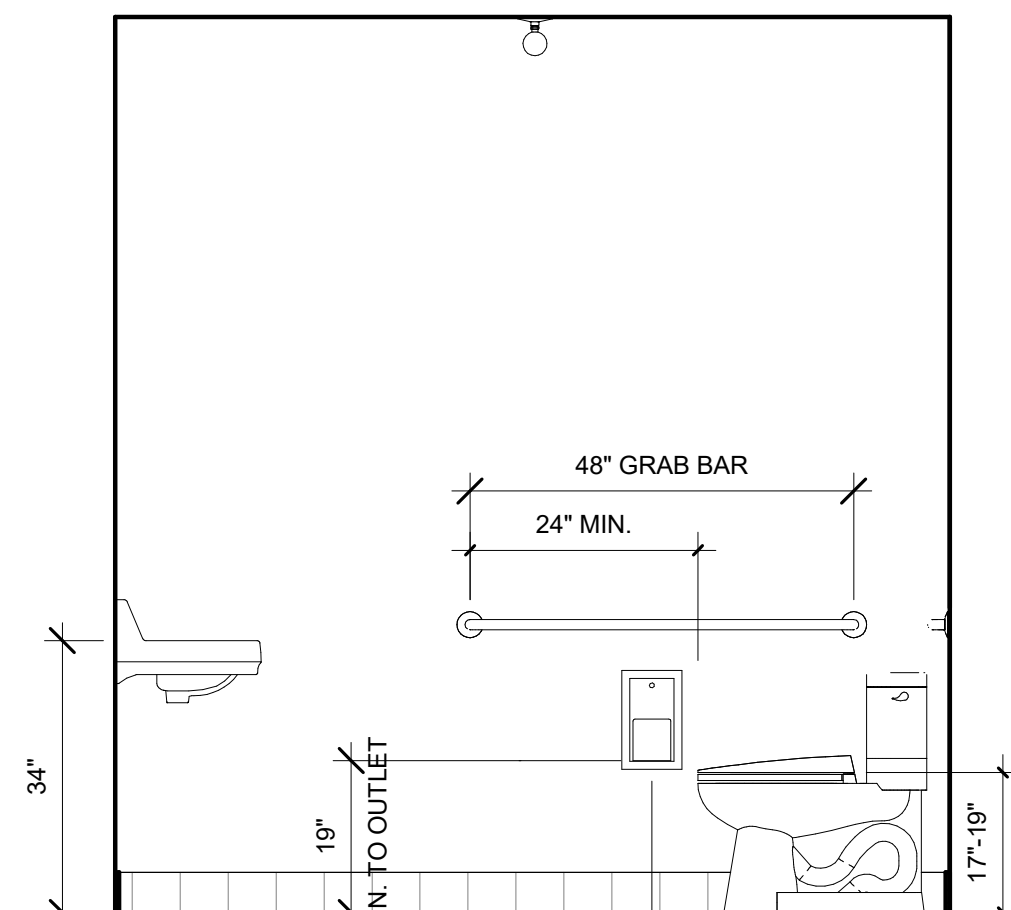
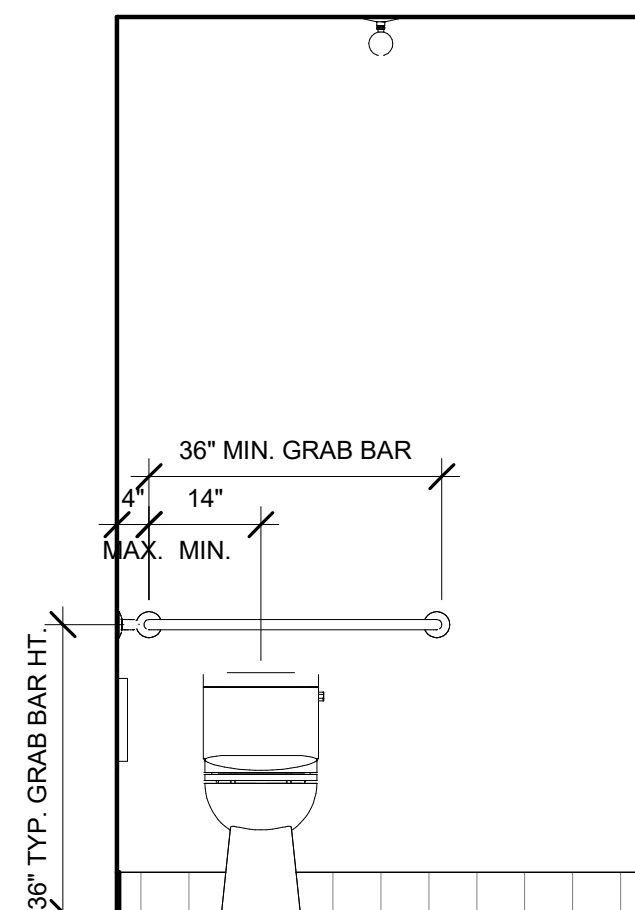
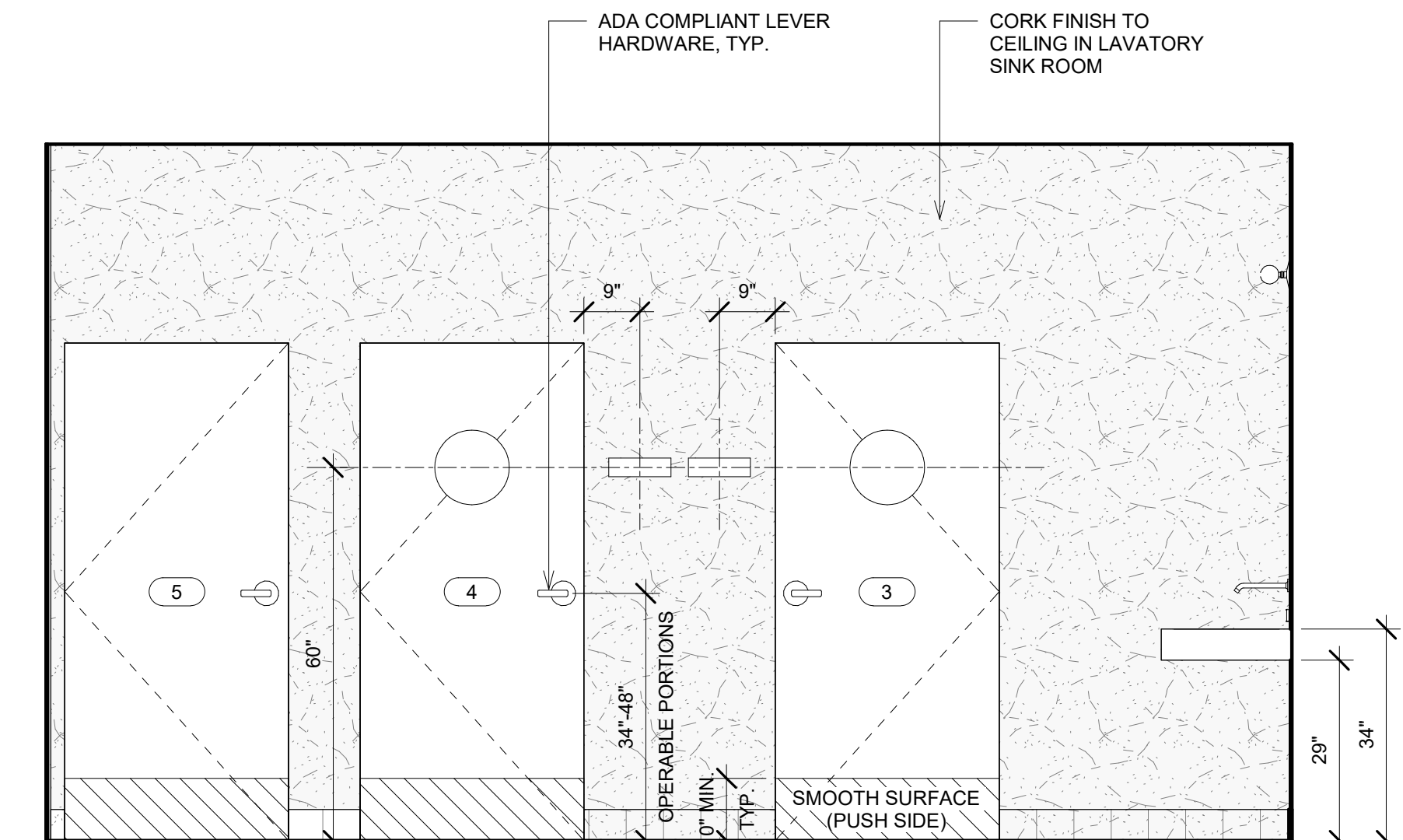
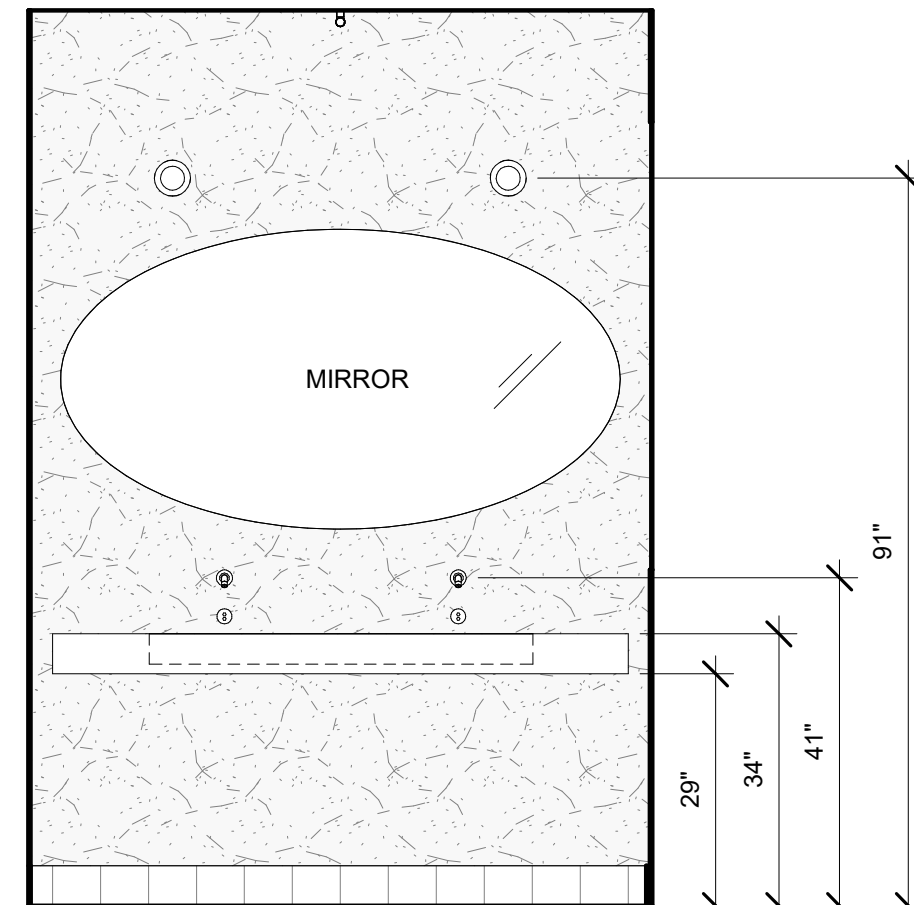
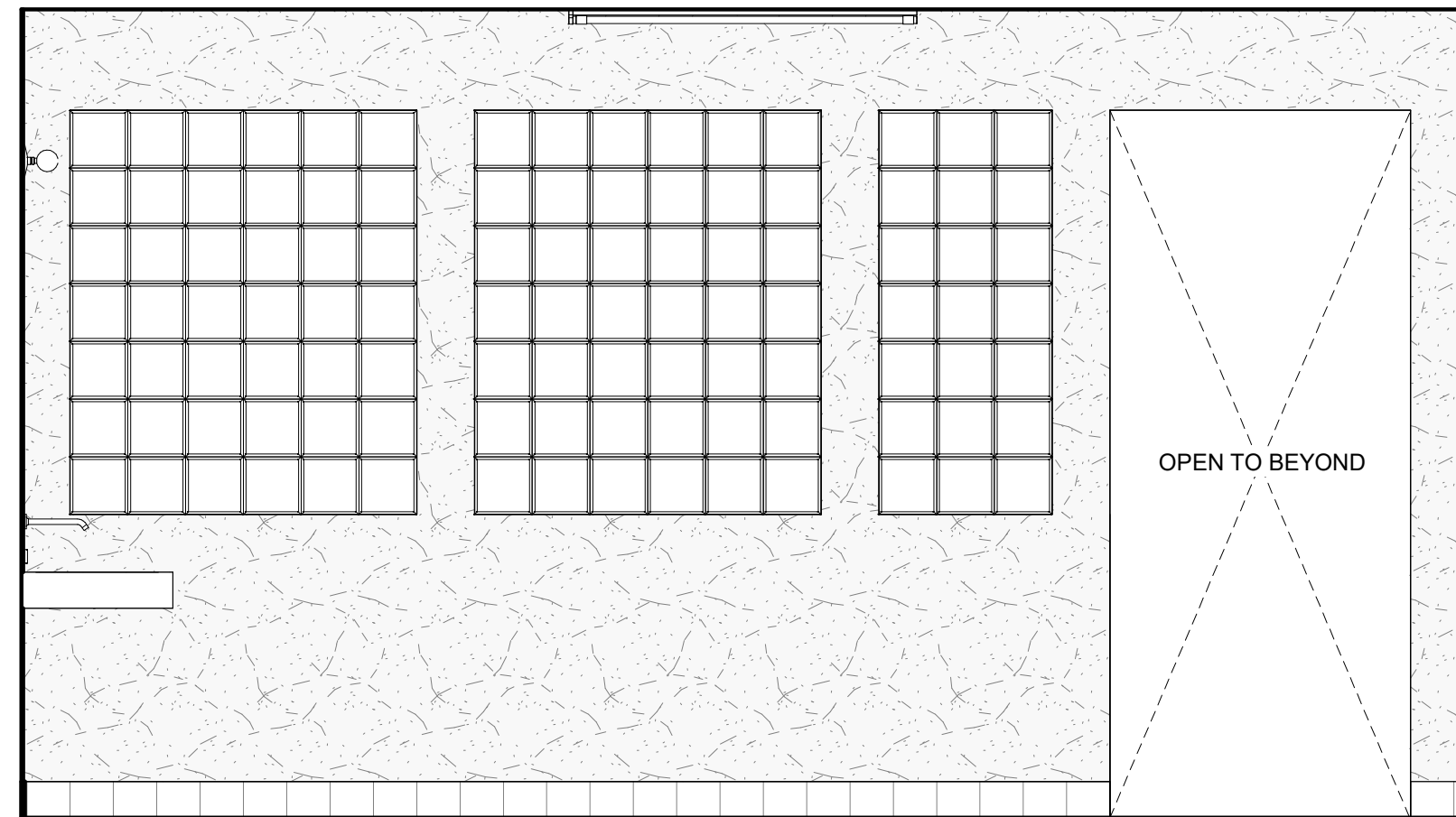
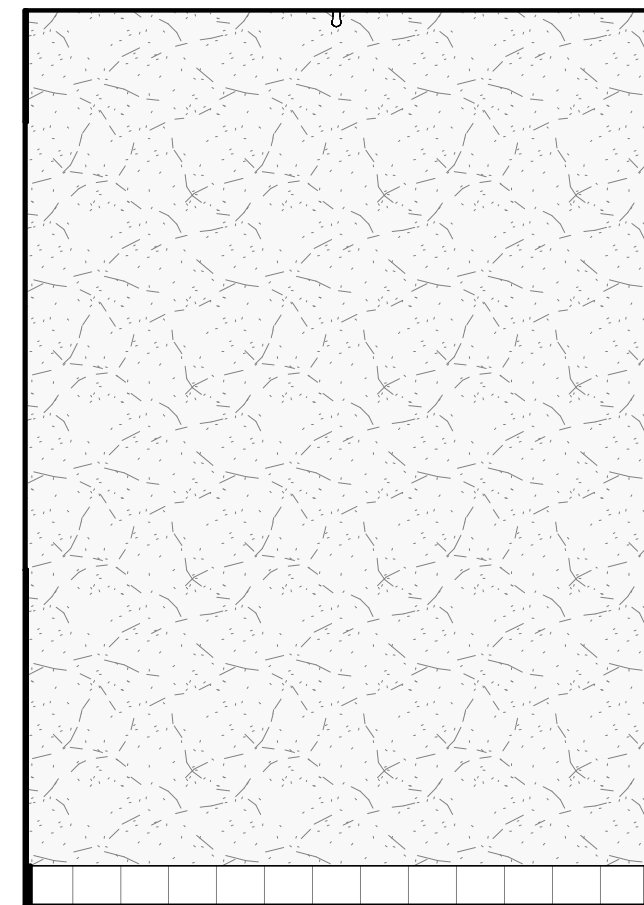
NO.	DATE	DESCRIPTION
1	04/19/2024	AL FRESCO PERMIT

FLOORPLAN AND
OCCUPANCY
PLAN

PROJECT #
Number

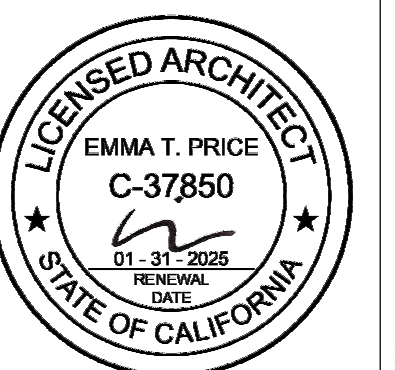


A-100



INTERIOR ELEVATIONS - RESTROOMS

PROJECT #	Project Number
-----------	-------------------



A-201

DESCRIPTION

AL FRESCO PERMIT

DATE	18/2024
------	---------

NO.	
1	

--	--

[illegible]

9

OR

ERIC

ITE

 \leq

--	--

[illegible]

EMMA T PRICE • ARCHITECT

3744 LANDA SI #8 LOS ANGELES, CA 90039
831.359.7098 EMMA@EMMATPRICE.COM

980 N. BROADWAY
LOS ANGELES CA

CAFE TRISTE

2004/05/25